

MULTIFUNCTIONAL DIGITAL SYSTEMS / PRINTER

Software Installation Guide


Preface


Thank you for purchasing TOSHIBA Multifunctional Digital Systems / Printer. This manual explains the instructions for installing client software. Read this manual before using the functions.


■ How to read this manual


□ Symbols in this manual


In this manual, some important items are described with the symbols shown below. Be sure to read these items before using this equipment.

 **WARNING** Indicates a potentially hazardous situation which, if not avoided, could result in death, serious injury, or serious damage, or fire in the equipment or surrounding objects.

 **CAUTION** Indicates a potentially hazardous situation which, if not avoided, may result in minor or moderate injury, partial damage to the equipment or surrounding objects, or loss of data.

 **Note** Indicates information to which you should pay attention when operating the equipment.

 **Tip** Describes handy information that is useful to know when operating the equipment.

 Pages describing items related to what you are currently doing. See these pages as required.

□ Target audience for this manual

This is a manual that is aimed at general users and administrators.

□ Model and series names in this manual

In this manual, each model name is replaced with the series name as shown below.

Model name	Series name in this manual
e-STUDIO478S	e-STUDIO478S
e-STUDIO528P	e-STUDIO528P
e-STUDIO338CS/388CS	e-STUDIO388CS Series
e-STUDIO388CP	e-STUDIO388CP
e-STUDIO389CS/479CS	e-STUDIO479CS Series

□ Screens and Operation Procedures

- In this manual, the screens and the operation procedures in Windows are described for Windows 10. The details on the screens may differ depending on your model and how the equipment is used, such as the status of the installed options, the OS version and the applications.
- The illustration screens used in this manual are for paper in the A/B format. If you use paper in the LT format, the display or the order of buttons in the illustrations may differ from that of your equipment.

□ Expression in this manual

- In this manual, “Windows 7 Service Pack 1 or later” is expressed as “Windows 7 or later”.
- In this manual, “Windows Server 2008 Service Pack 2 or later” is expressed as “Windows Server 2008 or later”.

□ Install Disc co-packed with the equipment

In this manual, the discs for installing the software are generically described in “Install Disc”.

❑ Trademarks

- Microsoft, Windows, Windows NT, and the brand names and product names of other Microsoft products are trademarks of Microsoft Corporation in the US and other countries.
- Apple, AppleTalk, Macintosh, Mac, Mac OS, Safari, iPhone, iPod touch, TrueType, AirPrint, AirPrint logo, and iPad are trademarks of Apple Inc.
- IOS is a trademark or registered trademark of Cisco in the U.S. and other countries and is used under license.
- Adobe®, Acrobat®, Reader, and PostScript® are trademarks or registered trademarks of Adobe Systems Incorporated.
- Mozilla®, Firefox® and the Firefox logo® are trademarks or registered trademarks of Mozilla Foundation in the U.S. and other countries.
- IBM, AT and AIX are trademarks of International Business Machines Corporation.
- NOVELL®, NetWare®, and NDS® are trademarks of Novell, Inc.
- e-STUDIO, e-BRIDGE, and TopAccess are trademarks of Toshiba Tec Corporation.
- Other company names and product names in this manual are the trademarks of their respective companies.

❑ Official Names of Windows Operating System

- The official name of Windows® 7 is Microsoft Windows 7 Operating System.
- The official name of Windows® 8.1 is Microsoft Windows 8.1 Operating System.
- The official name of Windows® 10 is Microsoft Windows 10 Operating System.
- The official name of Windows Server® 2008 is Microsoft Windows Server 2008 Operating System.
- The official name of Windows Server® 2012 is Microsoft Windows Server 2012 Operating System.
- The official name of Windows Server® 2016 is Microsoft Windows Server 2016 Operating System.

END USER SOFTWARE LICENSE AGREEMENT

INSTALLING OR OTHERWISE USING THIS SOFTWARE PRODUCT CONSTITUTES YOUR ACCEPTANCE OF THE FOLLOWING TERMS AND CONDITIONS (UNLESS A SEPARATE LICENSE IS PROVIDED BY THE SUPPLIER OF APPLICABLE SOFTWARE IN WHICH CASE SUCH SEPARATE LICENSE SHALL APPLY). IF YOU DO NOT ACCEPT THESE TERMS, YOU MAY NOT INSTALL OR USE THIS SOFTWARE, AND YOU MUST PROMPTLY RETURN THE SOFTWARE TO THE LOCATION WHERE YOU OBTAINED IT.

GRANT OF SOFTWARE LICENSE:

This is a legal agreement between you, the end-user (“You”), and TOSHIBA TEC Corporation (“TTEC”). This software, fonts (including their typefaces) and related documentation (“Software”) is licensed for use with TTEC MFP on which it was installed to the designated device you use (“System”) in accordance with the terms contained in this License Agreement. TTEC disclaims responsibility for the installation and/or use of Software, and for the results obtained by using Software. You may use one copy of Software as installed on a single System, and may not copy Software for any reason except as necessary to use Software on a single System. Any copies of Software shall be subject to the conditions of this License Agreement. You may not, nor cause or permit any third party to, modify, adapt, merge, translate, reverse compile, reverse assemble, or reverse engineer Software. You may not use Software, except in accordance with this license. No title to the intellectual property in Software is transferred to you and source code of Software is not licensed to you. You may not perform modification, deletion, etc. to the copyright notice of Software (including in duplicate). You will be held legally responsible for any copyright infringement, unauthorized transfer, reproduction or use of Software.

TERM:

This license is effective until terminated by TTEC or upon your failure to comply with any term of this License Agreement. Upon termination, you agree to destroy all copies of Software. You may terminate this license at any time by destroying Software and all copies.

DISCLAIMER OF WARRANTY:

Software is provided “AS IS” without warranty of any kind, either express or implied, including, but not limited to, the implied warranties of merchantability, fitness for a particular purpose, title, and non-infringement. TTEC disclaims any warranty relating to the quality and performance of Software. If Software proves defective, You (and not TTEC) shall be responsible for the entire cost of all necessary servicing, repair or correction. TTEC does not warrant that the functions contained in Software will meet your requirements or that the operation of Software will be uninterrupted or error free.

UPDATE AND DISCONTINUE OF SOFTWARE

TTEC may update, upgrade and discontinue Software without any restriction.

THIRD PARTY SOFTWARE

There are cases in which third party software is contained in Software (including future updated and upgraded versions). Such third party software is provided to you on different terms from those of this License Agreement, in the form of term stated in the License Agreement with the suppliers or the readme files (or files similar to readme files) separately from this License Agreement (“Separate Agreements, etc.”). When you use the third party software, you must comply with the term of the third party software stated in the Separate Agreements, etc. Except the term of the third party software, you must comply with the term stated in this License Agreement.

LIMITATION OF LIABILITY:

IN NO EVENT WILL TTEC BE LIABLE TO YOU FOR ANY DAMAGES, WHETHER IN CONTRACT, TORT, OR OTHERWISE (except personal injury or death resulting from negligence on the part of TTEC), INCLUDING WITHOUT LIMITATION ANY LOST PROFITS, LOST DATA, LOST SAVINGS OR OTHER INCIDENTAL, SPECIAL OR CONSEQUENTIAL DAMAGES ARISING OUT OF THE USE OR INABILITY TO USE SOFTWARE, EVEN IF TTEC OR ITS SUPPLIERS HAVE BEEN ADVISED OF THE POSSIBILITY OF SUCH DAMAGES, NOR FOR THIRD PARTY CLAIMS.

U.S. GOVERNMENT RESTRICTED RIGHTS:

The Software is provided with RESTRICTED RIGHTS. Use, duplication or disclosure by the U.S. Government is subject to restrictions set forth in subdivision (b)(3)(ii) or (c)(i)(ii) of the Rights in Technical Data and Computer Software Clause set forth in 252.227-7013, or 52.227-19 (c)(2) of the DOD FAR, as appropriate.

GENERAL:

You may not sublicense, lease, rent, assign or transfer this license or Software. Any attempt to sublicense, lease, rent, assign or transfer any of the rights, duties or obligations hereunder is void. You agree that you do not intend to, and will not ship, transmit, export or re-export (directly or indirectly) Software, including any copies of Software, or any technical information contained in Software or its media, or any direct product thereof, to any country or destination prohibited by government of Japan, the United States and the relevant country. This license shall be governed by the laws of Japan or, at the election of a Supplier of TTEC concerned with a dispute arising from or relating to this Agreement, the laws of the Country designated from time to time by the relevant Supplier of TTEC. If any provision or portion of this License Agreement shall be found to be illegal, invalid or unenforceable, the remaining provisions or portions shall remain in full force and effect. Suppliers of Licensor shall be deemed third party beneficiaries of this License Agreement.

YOU ACKNOWLEDGE THAT YOU HAVE READ THIS LICENSE AGREEMENT AND THAT YOU UNDERSTAND ITS PROVISIONS. YOU AGREE TO BE BOUND BY ITS TERMS AND CONDITIONS. YOU FURTHER AGREE THAT THIS LICENSE AGREEMENT CONTAINS THE COMPLETE AND EXCLUSIVE AGREEMENT BETWEEN YOU AND TTEC AND ITS SUPPLIERS AND SUPERSEDES ANY PROPOSAL OR PRIOR AGREEMENT, ORAL OR WRITTEN, OR ANY OTHER COMMUNICATION RELATING TO THE SUBJECT MATTER OF THIS LICENSE AGREEMENT.

Contractor/Manufacturer of Software is TOSHIBA TEC Corporation, 1-11-1, Osaki, Shinagawa-ku, Tokyo, 141-8562, Japan

FURTHERMORE, YOU SHALL ACCEPT TO THE FOLLOWING TERMS AND CONDITIONS THAT THE MANUFACTURER LICENSES YOU REGARDING THE MANUFACTURER'S PRINTER AND CARTRIDGE.

PRINTER LICENSE

The patented printer is licensed for, and designed to work with only genuine toner and/or ink cartridges (and developer components, in the case of a laser printer) made by the manufacturer of this printer for the life of the patented printer. Under license of this printer, you agree to: (1) use only genuine toner and/or ink cartridges made by the manufacturer of this printer with this licensed printer except as otherwise provided below, (2) if the patented printer is a laser printer, use only genuine developer components made by the manufacturer of this printer with this licensed laser printer except as otherwise provided below, and (3) pass this license/agreement to any subsequent user of this licensed printer. The patented toner and/or ink cartridges (and developer components in the case of a laser printer) inside are licensed subject to a restriction that they may be used only once. Following their initial use, you agree to return them only to TTEC or the manufacturer for recycling. Please contact TTEC for information regarding free empty toner cartridge returns. The genuine toner and/or ink cartridges are designed to stop working after delivering a fixed amount of toner and/or ink. A variable amount of toner and/or ink may remain in them when replacement is required. If you do not accept the terms of this single use license/agreement; return this product original packaging to your point of purchase. Replacement toner and/or ink cartridge(s) sold without these terms are available. Please contact TTEC or your place of purchase for more information regarding the availability of these regular cartridges. Please be aware that a regular cartridge, that is cartridges not sold subject to this single use patent license, may be refilled by you, or a third party, as the only cartridge alternative to be used with the licensed printer.

FIRMWARE FOR PRINTER UPDATES

FIRMWARE FOR PRINTER UPDATES MAY MODIFY PRINTER SETTINGS AND CAUSE COUNTERFEIT AND/OR UNAUTHORIZED PRODUCTS, SUPPLIES, PARTS, MATERIALS (SUCH AS TONERS AND INKS), SOFTWARE, OR INTERFACES ("PRODUCTS") TO STOP WORKING. AUTHORIZED USE OF GENUINE PRODUCTS WILL NOT BE IMPACTED.

CARTRIDGE LICENSE AGREEMENT

TTEC agrees that the patented print cartridge(s) ("Cartridge") shipped with this printing device is (are) sold subject to the following license/agreement: The patented print cartridge(s) contained inside is (are) licensed for a single use only and is (are) designed to stop working after the delivery of a fixed amount of toner/ink. A variable amount of toner/ink will remain in the cartridge when replacement is required. After this single use, the license/right to use the print cartridge terminates and the used cartridge must be returned only to the manufacturer for remanufacturing, refilling or recycling. If TTEC buys another cartridge in the future that is sold subject to the same or similar terms, TTEC hereby accept such terms as to that cartridge as well. If you do not accept the terms of this single use license/agreement; return this product in its original packaging to your point of purchase. Replacement cartridges sold without these terms are available. Please contact TTEC or your place of purchase for more information regarding the availability of these regular cartridges.

Fuser/Imaging Unit License - Single Use: Please read before opening. Opening this package the patented fuser and/or imaging unit inside confirms your acceptance of the following license/agreement. The patented fuser and imaging unit are each sold at a special price subject to a patent restriction that each be used only once. Following the initial use, you agree to return the fuser and/or imaging unit only to the manufacturer for remanufacture and/or recycling. The fuser and/or imaging unit are designed to stop working once they reach their respective rated life (as established by the manufacturer). If you do not accept these terms, return the unopened package point of purchase. Replacement fuser(s) and imaging unit(s) sold without these terms are available.

MICROSOFT CORPORATION NOTICES

1. This product may incorporate intellectual property owned by Microsoft Corporation. The terms and conditions upon which Microsoft is licensing such intellectual property may be found at <http://go.microsoft.com/fwlink/?LinkId=52369>.
2. This product is based on Microsoft Print Schema technology. You may find the terms and conditions upon which Microsoft is licensing such intellectual property at <http://go.microsoft.com/fwlink/?LinkId=83288>.

CONTENTS

Preface	3
END USER SOFTWARE LICENSE AGREEMENT	5

Chapter 1 OVERVIEW

About the Install Disc	12
For Windows.....	12
Contents of Installer	13
Precautions for Using Firewall Software	14

Chapter 2 RECOMMENDED INSTALLATION

Procedure for Recommended Installation	16
---	-----------

Chapter 3 INSTALLING PRINTER DRIVER FOR WINDOWS

Before Installation	22
Type of printer driver	22
System requirements	22
About installation procedure	23
Installing the Printer Driver	24
Installing the printer driver by using Software Installer	24
Installing the printer driver by using the individual installer	32
Other Installations	40
Raw TCP/LPR printing (“Add Printer” installation from file)	40
USB printing	46
IPP printing.....	50
Uninstalling Printer Driver	54
Windows 7 or later / Windows Server 2012 or later.....	54
Windows Server 2008.....	56
Repairing Printer Driver	58

Chapter 4 INSTALLING SCAN DRIVER AND UTILITIES (Windows)

Before Installation	60
Type of scan driver and utilities	60
System requirements	60
Installing Scan Driver and Utilities	61
Installing the scan driver and utilities using the installer	61
Uninstalling Scan Driver and Utilities	63

Chapter 5 INSTALLING NETWORK FAX UTILITIES (Windows)

Before Installation	66
Type of network fax utilities	66
System requirements	66
Installing Network Fax Utilities	67
Uninstalling the Network Fax Software	68
Uninstalling N/W-Fax driver (TOSHIBA Universal Fax).....	68
Uninstalling Phone Book.....	68

Chapter 6 INSTALLATION MAINTENANCE

Uninstalling Client Software	70
Repairing Client Software	71

Chapter 7 CAUTIONS AND RELATED MESSAGES REGARDING INSTALLATION (Windows)

Cautions before installation	74
Messages that may appear in installation	75
Cautions after installation	76

INDEX	77
--------------------	-----------

1

OVERVIEW

This chapter provides an overview of the software installation.

About the Install Disc	12
For Windows.....	12
Contents of Installer	13
Precautions for Using Firewall Software.....	14

About the Install Disc

■ For Windows

The contents of the Install Disc:

Client software installer

[Install Disc]:\e-STUDIO\Setup.exe

This is the setup program to install the Universal Printer 2 driver and other client software on your computer.

Universal Printer 2 driver

The setup files for installing the Universal Printer 2 driver for each language version are included in the following folder:

They allow you to install the driver on Windows 7 or later / Windows Server 2008 or later.

[Install Disc]:\Client\Drivers\UNI\

N/W-Fax drivers (TOSHIBA Universal Fax)

The setup files for installing the N/W-Fax driver (TOSHIBA Universal Fax) for each language version are included in the following folder:

They allow you to install the driver on Windows 7 or later / Windows Server 2008 or later.

- For the Windows computer 32-bit edition
[Install Disc]:\Client\FAX\32bit\
 - For the Windows computer 64-bit edition
[Install Disc]:\Client\FAX\64bit\

Phone Book

The setup files for installing the Phone Book are included in the following folder:

They allow you to install the driver on Windows 7 or later / Windows Server 2008 or later.

- For Windows computer 32-bit edition
[Install Disc]:\Client\PB\32bit\
 - For Windows computer 64-bit edition
[Install Disc]:\Client\PB\64bit\

Printer Network TWAIN driver

The setup files for installing the Printer Network TWAIN driver are included in the following folder:

[Install Disc]:\Client\NS\

TOSHIBA USB Scan driver

The setup files for installing the TOSHIBA USB Scan driver are included in the following folder:

- For the Windows computer 32-bit edition
[Install Disc]:\Client\LS\32bit\
 - For the Windows computer 64-bit edition
[Install Disc]:\Client\LS\64bit\

The following software can be installed by the Installer in the Install Disc.

Printer driver (Printing function)

The printer driver is a software component that enables application programs to interact with the TOSHIBA MFP. The TOSHIBA MFP comes with the Universal Printer 2 (PCL6) printer driver. The printer driver offers document print, layout and assembly functions that are not available with many applications.

TOSHIBA USB Scan driver (Scanning function)

This software allows you to perform scanning the originals set in the equipment from a client computer and acquire the image into the TWAIN/WIA-compliant application via USB connection.

Printer Network TWAIN driver (Scanning function)

This software allows you to perform scanning the originals set in the equipment remotely from a client computer and acquire the image into the TWAIN-compliant application.

N/W-Fax driver (TOSHIBA Universal Fax) (Printing function)

The N/W-Fax driver (TOSHIBA Universal Fax) enables you to set up send lists and send electronic documents from your client computer to one or more destinations. You print to the fax much the same way you would choose to print to a designated printer that makes using the N/W-Fax driver (TOSHIBA Universal Fax) quick and simple. You can select the fax properties.

Phone Book

With the Phone Book you can easily add or modify fax recipient names, fax numbers, and Internet Fax address (E-mail address) to the address book. This utility allows you to manage recipients of the fax, select and display fax recipients from the address book, as well as recipient fax numbers and other contact information.

Precautions for Using Firewall Software

When firewall software is used on Windows computers, installation may not be performed since network communication between this equipment and the computers is blocked by firewall software. Check if firewall software is used before installation, and follow the directions of your network administrator if it is used.

RECOMMENDED INSTALLATION

This chapter describes the recommended installation of the Installer.

Procedure for Recommended Installation	16
---	-----------

Procedure for Recommended Installation

Install the software using the recommended installation when you want to do so for the Universal Printer 2 driver and other client software on a Windows computer.

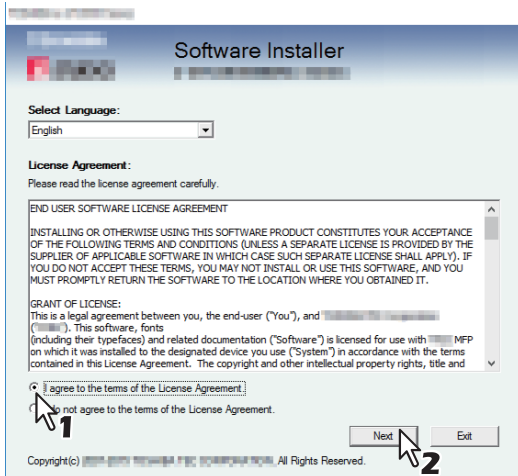
Note

To perform installation, you must log onto Windows with the “Administrator” account; this enables the installation and uninstallation of client software.

1 Insert the Install Disc into the disc drive.

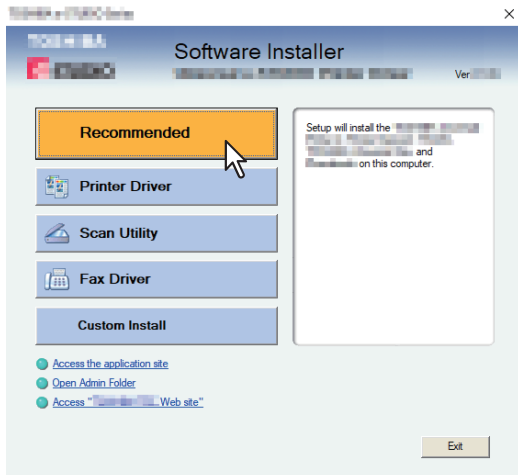
If Software Installer does not automatically start, use the Explorer to open the “e-STUDIO” folder in the Install Disc and double-click “Setup.exe”.

2 Select [I agree to the terms of the License Agreement.] and click [Next].

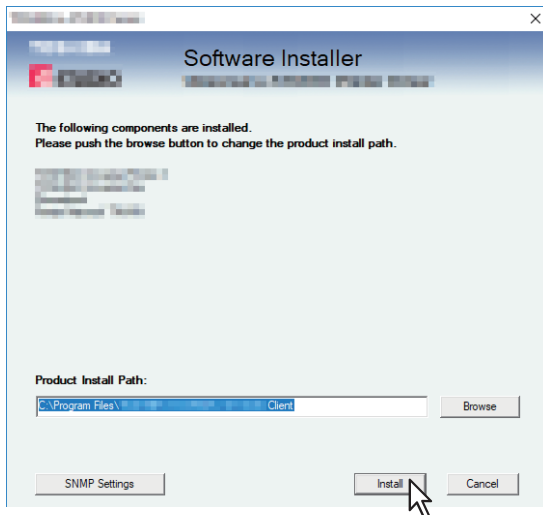


To change the display language, select the desired language from the [Select Language] box. The language of software to be installed differs depending on the language of operating system.

3 Click [Recommended].

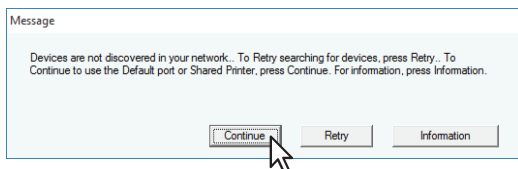


4 Confirm the list of the software to install and click [Install].



Note

- If the following message appears, click [Continue].



See step 7 or later in the following section to continue the installation:

P.27 “If your TOSHIBA MFP is not found”

[SNMP Settings]

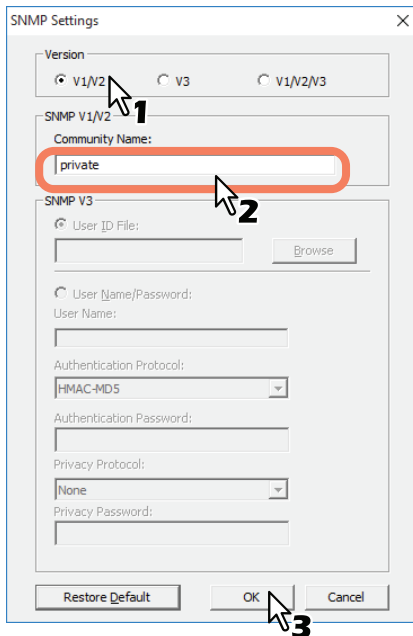
If the SNMP settings are not the same in your TOSHIBA MFP and the [SNMP Settings] dialog box, you cannot find your TOSHIBA MFP. Verify the correct SNMP settings on the [SNMP Settings] dialog box and change the settings, if needed.

Ask the administrator for details on the SNMP settings configured for your TOSHIBA MFP.

When SNMP V1 and V2 are used

1. Click [V1/V2] if a community name other than “private” (default) is set for the SNMP community name for your TOSHIBA MFP.
2. Change the SNMP community name.

3. Click [OK].



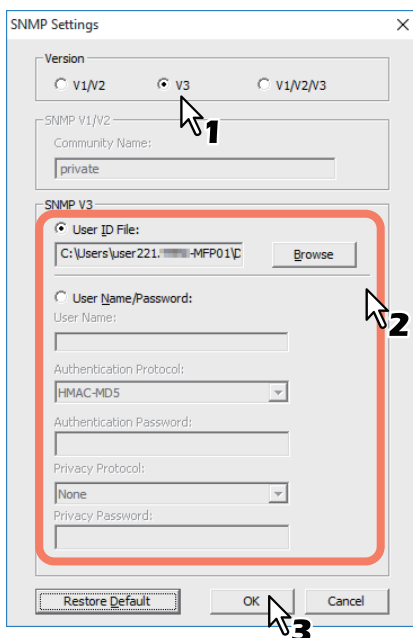
When SNMP V3 is used

1. Click [V3].
2. When a user ID file is used for authentication, click [Browse] to specify the file.
When user authentication information is used for authentication, click [User Name/Password] to enter the necessary information.

Note

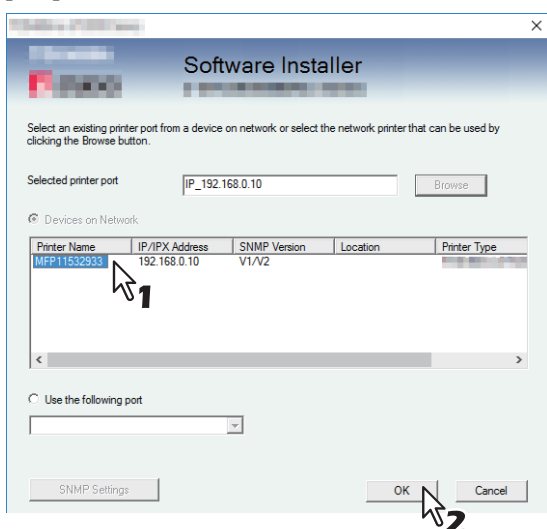
Consult the administrator for preliminary advice on how to authenticate users.

3. Click [OK].



* When SNMP V1, V2, and V3 are configured for your TOSHIBA MFP, perform both of the above settings.

- 5** A list of the discovered printers is displayed. Then select this equipment on the list and then click [OK].



The TCP/IP port is created.

- 6** The installation starts.
- 7** When the installation is complete, click [Finish].
The main menu is displayed.

Tip

The Installer may ask you to restart your computer. If it does, select “Yes, I want to restart my computer now.” and click [Finish] to restart your computer.

- 8** Click [Exit].
When a message “Do you want to close TOSHIBA e-STUDIO Software Installer?” appears asking whether to finish the installer, click [Yes].

INSTALLING PRINTER DRIVER FOR WINDOWS

This chapter provides instructions on how to install printer driver for Windows.


Before Installation	22
Type of printer driver	22
System requirements	22
About installation procedure	23
Installing the Printer Driver	24
Installing the printer driver by using Software Installer	24
Installing the printer driver by using the individual installer	32
Other Installations	40
Raw TCP/LPR printing (“Add Printer” installation from file)	40
USB printing	46
IPP printing.....	50
Uninstalling Printer Driver	54
Windows 7 or later / Windows Server 2012 or later.....	54
Windows Server 2008.....	56
Repairing Printer Driver	58

Before Installation

This section will help you to plan an installation suited to your environment. Before installing the printer driver, read this section.

When the same printer driver has been installed previously

Before updating the printer driver, delete the existing printer driver.

 P.54 “Uninstalling Printer Driver”

If you want to reinstall the same type of printer driver with another version, first uninstall the existing one and restart your computer.

■ Type of printer driver

Universal Printer 2 driver — This is the PCL6 printer driver. You can use it depending on the purposes of the applications in various usages.

■ System requirements

To install the printer driver and other client software on a Windows computer, the following is required.

- **Display resolution**
1024 x 768 dots or more
- **Display color**
High Color (16bit) or higher is recommended
- **CPU**
Recommended environment required by OS
- **Memory**
The required memory size for OS.
- **OS**
Windows 7 Service Pack 1 or later
Windows Server 2008 Service Pack 2 or later

■ About installation procedure

Install the software according to your connection environment and the print method.:

Raw TCP/LPR printing

This equipment supports the Raw TCP and LPR printing via TCP/IP. When this equipment is connected to your computer in a TCP/IP network, Raw TCP/LPR printing may be most suitable.

📖 P.24 “Installing the Printer Driver”

Tip

- To print with a Raw TCP connection, this equipment must be configured to enable Raw TCP Print Service. Ask your administrator if the Raw TCP Print Service is enabled.
- To print with an LPR connection, this equipment must be configured to enable the LPD Print Service. Ask your administrator if the LPD Print Service is enabled.

SMB printing

This equipment can be used with an SMB printer connection that allows you to connect to this equipment using File and Printer Sharing for Microsoft Networks service. SMB printing is the common method used to set up the printer. However, SMB printing is not suitable for printing a large amount of documents.

📖 P.24 “Installing the Printer Driver”

Note

SMB printing assumes a small network. If you can use Windows 7 or later / Windows Server 2008 or later as a print server, it is recommended to set up for printing via Windows print server.

Internet printing

If you print to this equipment over the Internet, you can use IPP printing. This allows you to print to this equipment from anywhere on the Internet.



📖 P.50 “IPP printing”

Tip

To print with an IPP connection, this equipment must be configured to enable the IPP Print Service and must be connected to the Internet. Ask your administrator if the IPP Print Service is enabled.

Installing the Printer Driver

This section describes how to install a printer driver to a computer with a Windows OS. You can install the printer driver by using the Install Disc. The following two options are available:

- Using Software Installer
When you insert the Install Disc into the disc drive, Software Installer will launch automatically. This program allows you to install the printer driver and other client software on your computer. Use this option to install the printer drivers and other client software in one go.
 P.24 “Installing the printer driver by using Software Installer”
- Using the individual installers
The individual installer (essetup.exe) are contained in the Install Disc, which enable you to install the Universal Printer 2 driver individually. Use this option to install only the preferred printer driver.
 P.32 “Installing the printer driver by using the individual installer”

■ Installing the printer driver by using Software Installer

Perform installation corresponding to your Windows computer.

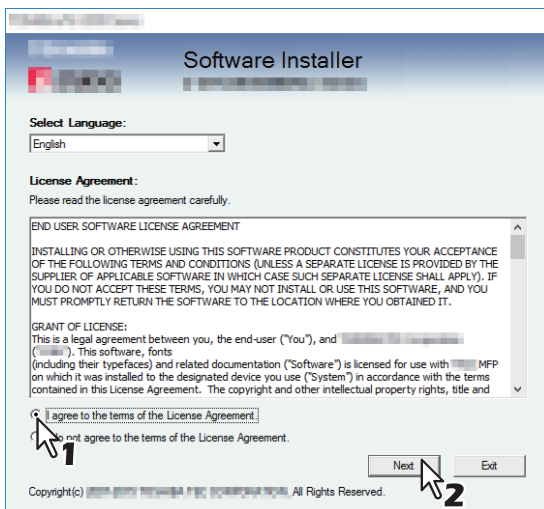
Note

To perform installation, you must log onto Windows with the “Administrator” account; this enables the installation and uninstallation of client software.

1 Insert the Install Disc into the disc drive.

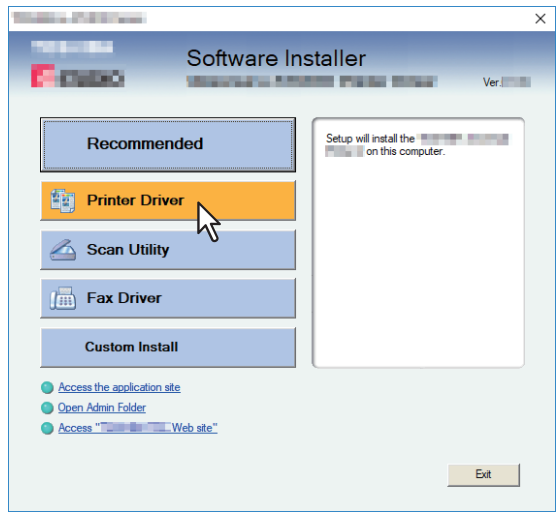
If Software Installer does not automatically start, use the Explorer to open the “e-STUDIO” folder in the Install Disc and double-click “Setup.exe”.

2 Select [I agree to the terms of the License Agreement.] and click [Next].



To change the display language, select the desired language from the [Select Language] box. The language of software to be installed differs depending on the language of operating system.

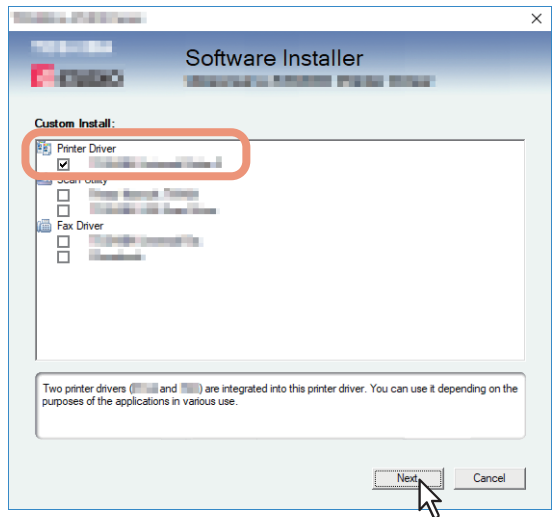
3 Click [Printer Driver] or [Custom Install].



Printer Driver — This option allows you to install only the Universal Printer 2 driver. When you select it, proceed to step 5.

Custom Install — This option allows you to select the printer driver and utilities which you want to install. When you select it, proceed to step 4.

4 Select the software items which you want to install, and then click [Next].



5 Confirm the list of the software to install and click [Install].

Tip

When you want to verify and/or change the SNMP settings to find the target TOSHIBA MFPs, see step 4 in the following section:

📖 P.16 “Procedure for Recommended Installation”

6 Configure the printer port.

The procedure for configuring the printer port varies depending on the connection. Go to the steps suited to your connection.

📖 P.26 “Raw TCP/LPR printing”

📖 P.31 “SMB printing”

❑ Raw TCP/LPR printing

Configure the Raw TCP/LPR port as described in the following procedure.

Note

Confirm the following before starting the configuration:

- This equipment is connected to the network and turned on.
- The TCP/IP setting is correct on this equipment and your computer.

Searching your TOSHIBA MFP automatically

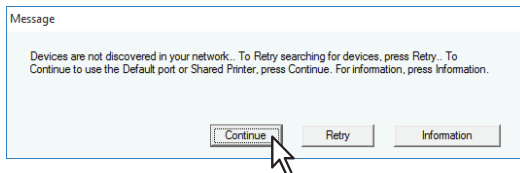
This equipment is automatically discovered over the network. Then you can install printer driver so as to configure the Raw TCP/LPR port.

Note

If this equipment is not discovered over the network after the installation is started, a dialog box indicating this appears. Follow the procedure below to continue the configuration.

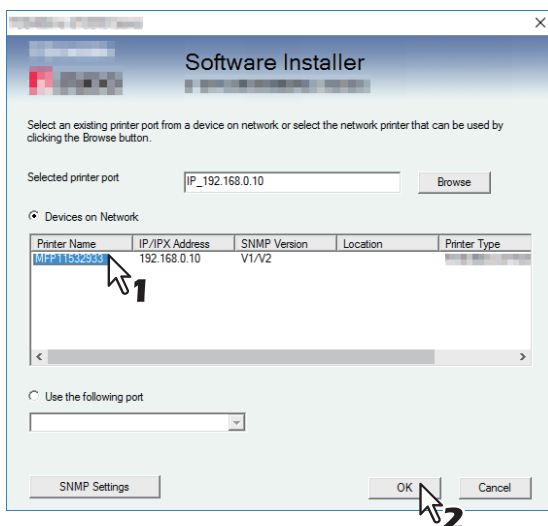
- To search this equipment over the network again, click [Retry].
- Confirm the SNMP settings specified in the [SNMP Settings] dialog box.
- To select a temporary local port and then configure the Raw TCP/LPR port, click [Continue]. Then follow the procedure as described in the following page:

📖 P.27 “If your TOSHIBA MFP is not found”



- If you know the IP address of this equipment, you can specify a printer port with the direct entry from the keyboard. In step 7, enter a network path shown below in [Selected printer port].
\\IP address or \\IP_<IP address>

7 A list for the discovered printers is displayed. Then select this equipment on the list and then click [OK].



The TCP/IP port is created.

Tip

Searching may take a while depending on the Windows OS or network environment.

8 Confirm that the installation is completed, and then click [Finish].

Tip

The Installer may ask you to restart your computer. If it does, select “Yes, I want to restart my computer now.” and click [Finish] to restart your computer.

9 Click [Exit].

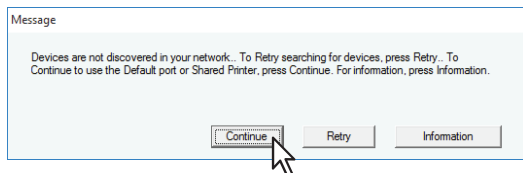
When a message appears asking whether to finish the installer, click [Yes].

If your TOSHIBA MFP is not found

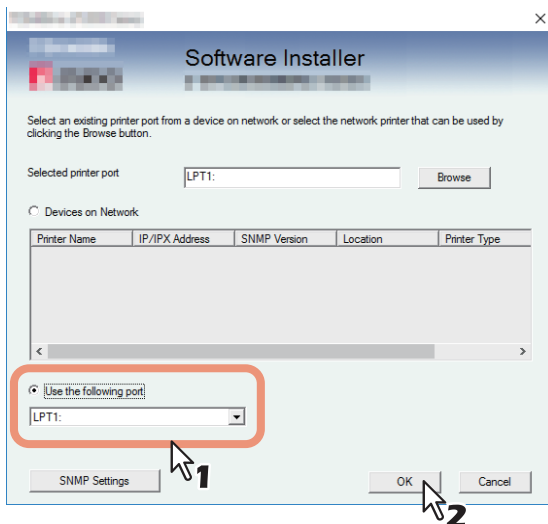
If your TOSHIBA MFP is not found, you must first install the printer driver by temporarily selecting a local port and then configuring the Raw TCP/LPR port.

Note

If this equipment is not discovered over the network after the installation is started, a dialog box indicating this appears. Click [Continue] to continue the configuration.



7 Select [Use the following port] and then select “LPT1: ”. Then click [OK].



8 Confirm that the installation is completed, and then click [Finish].

Tip

The Installer may ask you to restart your computer. If it does, select “Yes, I want to restart my computer now.” and click [Finish] to restart your computer.

9 Click [Exit].

When a message appears asking whether to finish the installer, click [Yes].

10 Open the printers folder.

Click [Start] and select [Settings] > [Devices] > [Devices and printers].

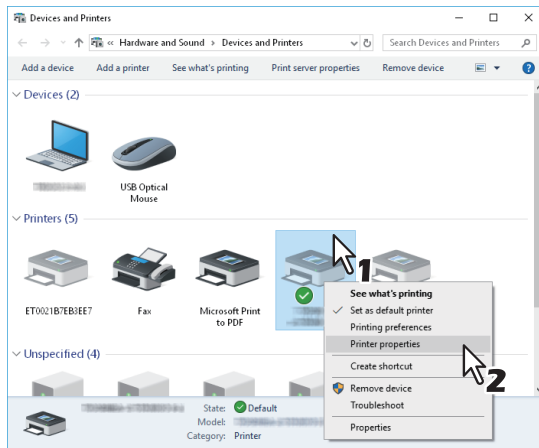
Tip

- For Windows 8.1 / Windows Server 2012, right-click in the lower left of the screen, then click [Control Panel] > [Devices and Printers].
- For Windows 7, click [Start] > [Devices and Printers].
- For Windows Server 2008, click [Start] > [Control Panel] > [Hardware and Sound] > [Printers].

11 Open the printer driver properties dialog box.

- **When using Windows 7 or later / Windows Server 2012 or later**

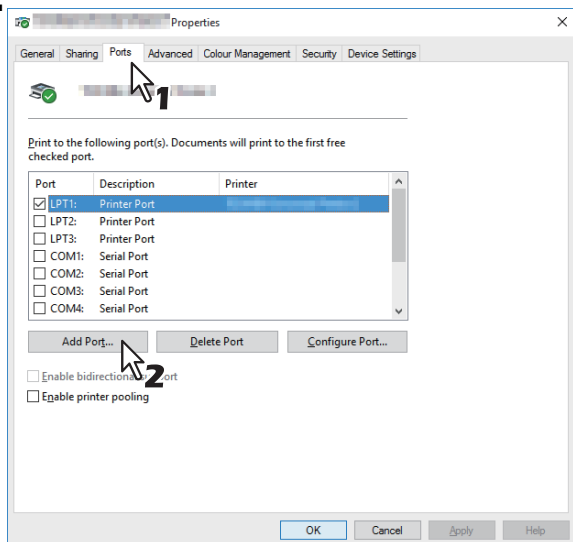
Select the installed printer driver and right-click to make the menu appear, then click [Printer properties].



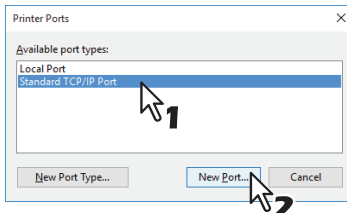
- **When using Windows Server 2008**

Select the installed printer driver. Click [Organize] and then [Properties].

12 Click the [Ports] tab and click [Add Port].

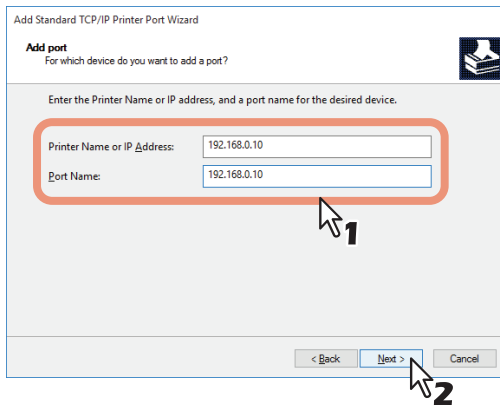


13 Select [Standard TCP/IP Port] and click [New Port].



14 Click [Next].

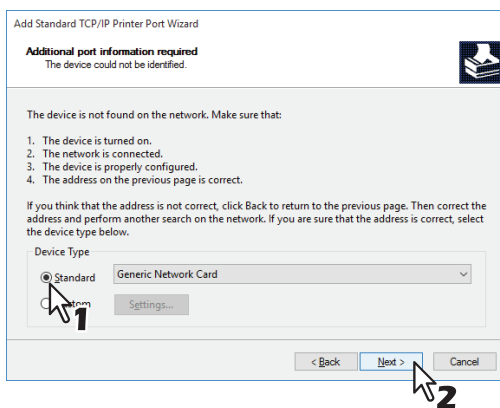
15 Enter the IP address of this equipment in the [Printer Name or IP Address] box and click [Next].



- If your network uses a DNS or WINS server, enter the printer name of this equipment provided from DNS or WINS in the [Printer Name or IP Address] box.
- In the [Port Name] box, the port name is automatically entered according to the IP address or DNS name entered in the [Printer Name or IP Address] box.
- Enter the IPv6 address in the [Printer Name or IP Address] box when the MFP is connected in an IPv6 network.

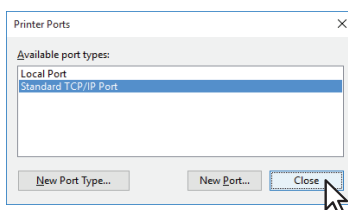
Note

If the following screen appears, select [Standard] and click [Next].

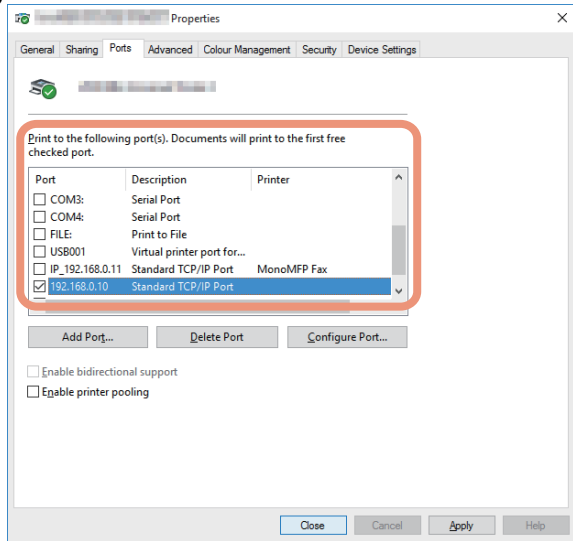


16 Click [Finish].

17 Click [Close] to close the [Printer Ports] dialog box.



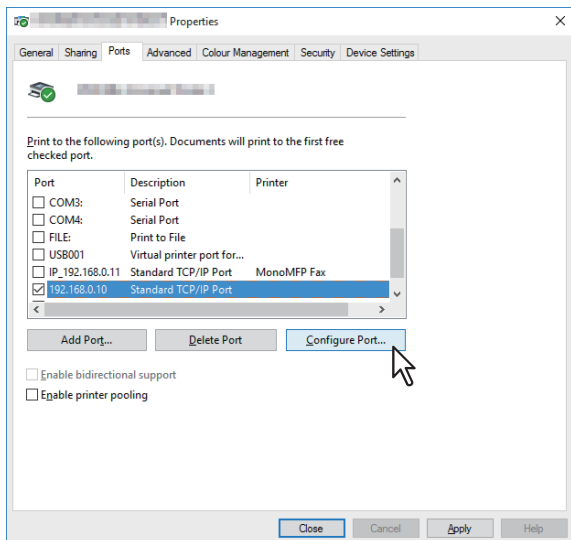
18 Make sure the created Raw TCP or LPR port is checked in the [Print to the following port(s)] list.



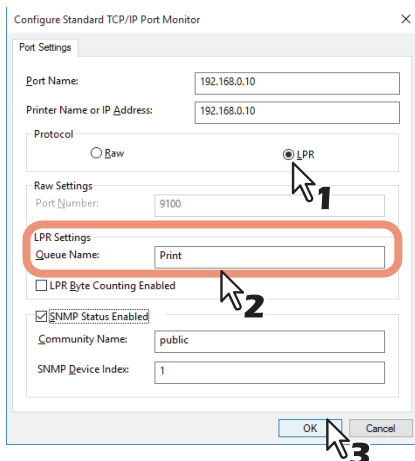
Tip

When the LPD Print setting is enabled, you can also configure LPR printing. When you want to configure LPR printing, follow the procedure below.

1. Click [Configure Port].



2. Select [LPR] at the [Protocol] group, enter "print" in the [Queue Name] box at the [LPR Settings] group, and then click [OK].



19 Click [OK] to save the setting.

Note

When necessary, click [Apply] and then click [OK].

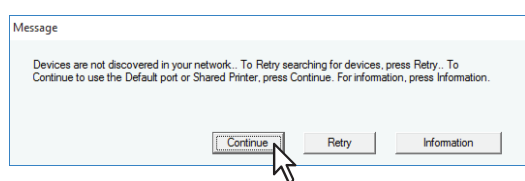
20 Click [Close].

❑ SMB printing

Install a printer driver by specifying the SMB port manually.

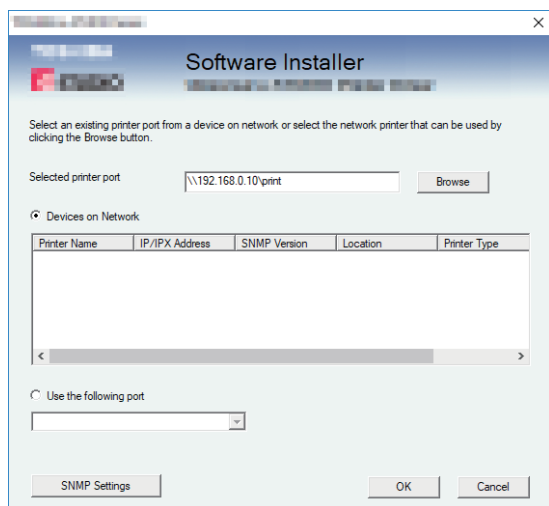
Note

- Before starting the configuration, make sure that this equipment is connected to a network and also that its power is turned ON.
- If this equipment is not discovered over the network after the installation is started, a dialog box indicating this appears. Click [Continue] to continue the configuration.



7 Enter a network path shown below in [Selected printer port].

\\<IP address>\print



8 Click [OK].

9 Confirm that the installation is completed, and then click [Finish].

Tip

The Installer may ask you to restart your computer. If it does, select “Yes, I want to restart my computer now.” and click [Finish] to restart your computer.

10 Click [Exit].

When a message appears asking whether to finish the installer, click [Yes].

■ Installing the printer driver by using the individual installer

Perform installation corresponding to your Windows computer.

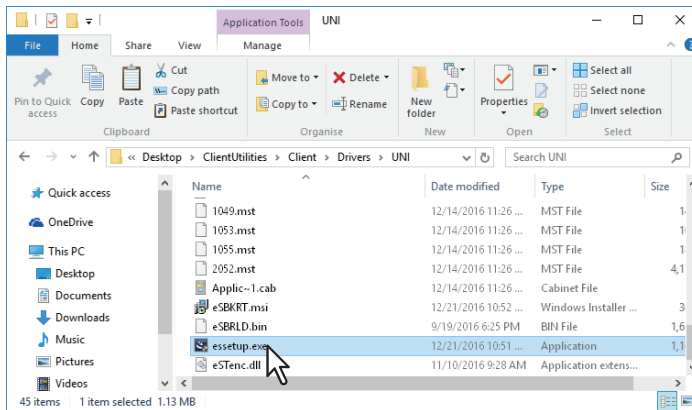
Note

To perform installation, you must log onto Windows with the “Administrator” account.

1 Insert the Install Disc into the disc drive.

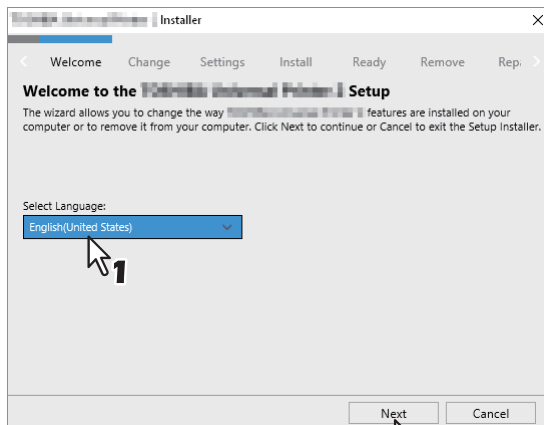
When you insert the Install Disc into the disc drive, Software Installer may launch automatically. In this case, click [Exit] to close it and continue the operation.

2 Open the folder containing the set up program, and double-click “essetup.exe”.

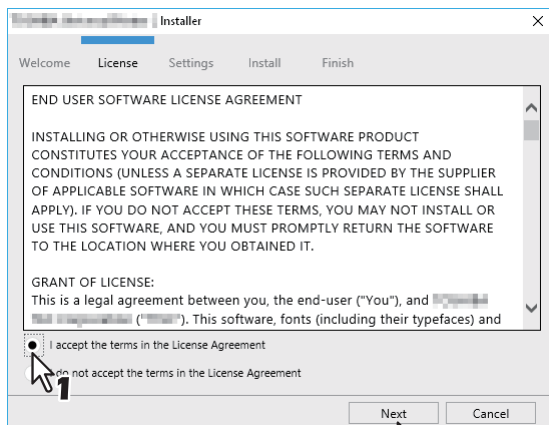


The set up program for installing the printer driver is contained in the following folder:
[Install Disc]:\Client\Drivers\UNI\

3 Select the desired language, and click [Next].



4 Select [I accept the terms in the License Agreement], and click [Next].



The Settings Port screen is displayed.

5 Configure the printer port.

The procedure for configuring the printer port varies depending on the connection. Go to the steps suited to your connection.

P.33 “Raw TCP/LPR printing”

P.36 “SMB printing”

Raw TCP/LPR printing

Configure the Raw TCP/LPR port as described in the following procedure.

Note

Confirm the following before starting the configuration:

- This equipment is connected to the network and turned on.
- The TCP/IP setting is correct on this equipment and your computer.

Searching your TOSHIBA MFP automatically

This equipment is automatically discovered over the network. Then you can install the printer driver so as to configure the Raw TCP/LPR port.

Note

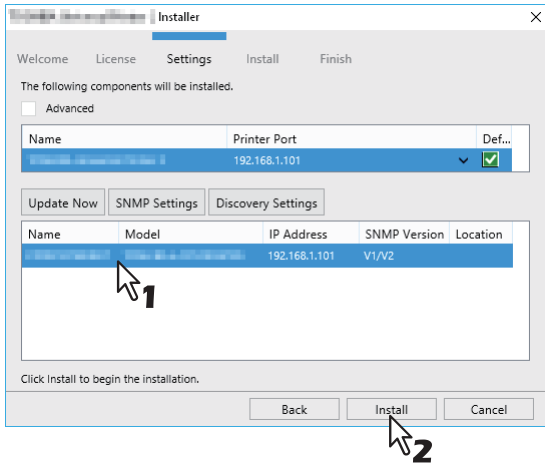
If this equipment is not discovered over the network after the installation is started, a dialog box indicating this appears. Follow the procedure below to continue the configuration.

- To search this equipment over the network again, click [Retry].
- Click [SNMP Settings] and confirm whether the SNMP settings specified in the [SNMP Settings] dialog box are correct.

When you confirm or change the SNMP settings in order to find your TOSHIBA MFP, see the following section.

- P.38 “Confirm or change the SNMP settings”
- When you set the conditions to search the MFPs on the network in the [Manual Selection] dialog box, see the following section.
 - P.39 “Narrowing Down Search Conditions”
- If your TOSHIBA MFP is not found, refer to the following page.
 - P.35 “If your TOSHIBA MFP is not found”
- If you know the IP address of this equipment, you can specify a printer port with the direct entry from the keyboard. In step 7, enter a network path shown below in [Printer port].
 - \\IP address or \\IP_<IP address>

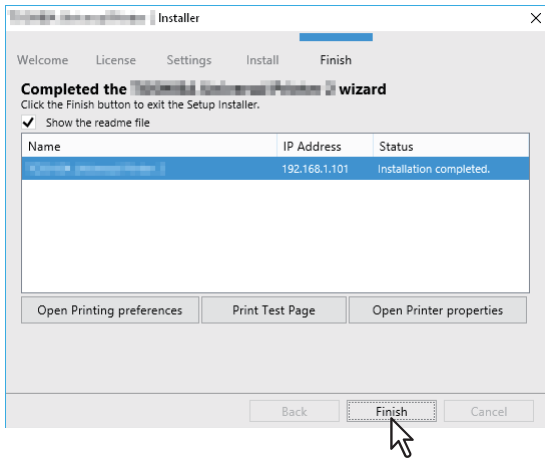
6 A list for the discovered printers is displayed. Then select this equipment on the list and then click [Install].



Tip

Searching may take a while depending on the Windows OS or network environment.

7 Click [Finish].



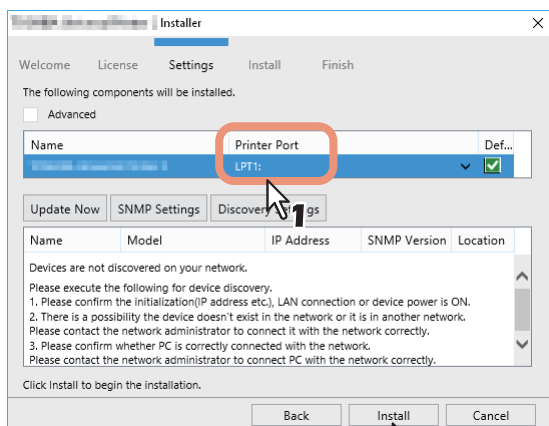
Tip

- The Installer may ask you to restart your computer. If it does, select “Yes, I want to restart my computer now.” and click [Finish] to restart your computer.
- You can set the printer driver and print settings which are required in order to perform test page printing or normal printing from this equipment. Click the buttons shown below to set them as needed. Setting can be made even after [Finish] has been clicked.
 - **Show the readme file:** When you select this check box, the Readme file is opened after [Finish] is clicked.
 - **[Open Printer Properties]:** The [Printer Preferences] dialog box of the installed printer driver is displayed. For details about the setting, refer to the **Printing Guide**.
 - **[Print Test Page]:** Print the test page from this equipment.
 - **[Open Printer Preferences]:** The [Printer Properties] dialog box is displayed. For details about the setting, refer to the **Printing Guide**.

If your TOSHIBA MFP is not found

If your TOSHIBA MFP is not found, you must first install the printer driver by temporarily selecting a local port and then configuring the Raw TCP/LPR port.

6 Select “LPT1:” under [Printer Port] and click [Install].

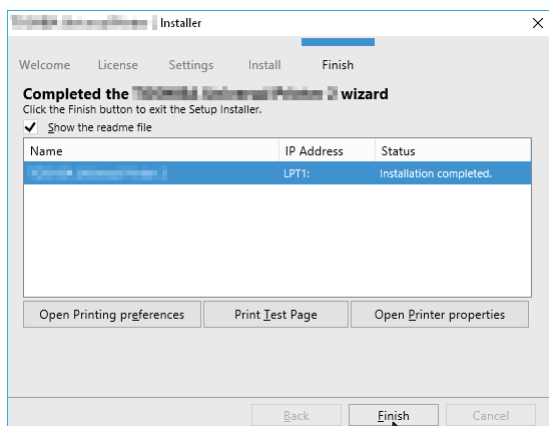


2

7 Click [Open Printer properties].

8 For the subsequent steps, follow the procedure from step 12 to step 20 on page 28 to page 31.

9 Click [Finish].

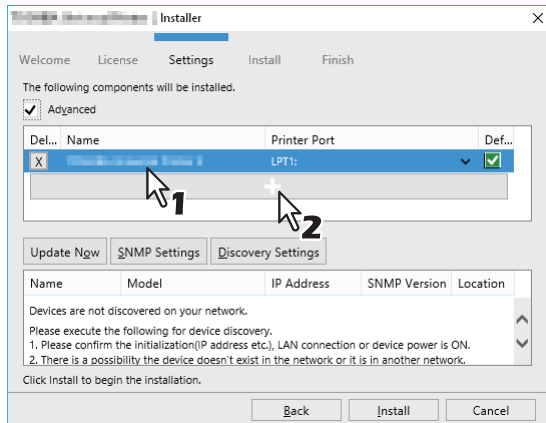


Tip

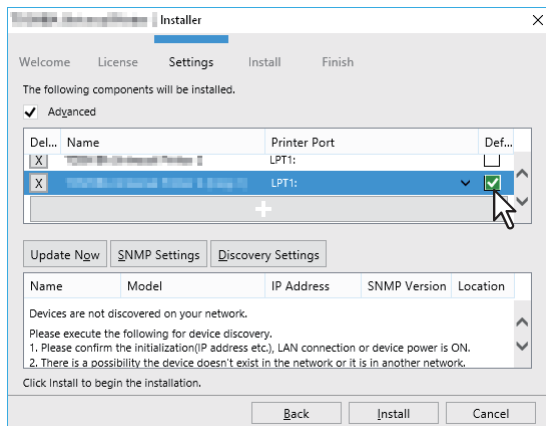
- The Installer may ask you to restart your computer. If it does, select “Yes, I want to restart my computer now.” and click [Finish] to restart your computer.
- You can set the printer driver and print settings which are required in order to perform test page printing or normal printing from this equipment. Click the buttons shown below to set them as needed. Setting can be made even after [Finish] has been clicked.
 - **Show the readme file:** When you select this check box, the Readme file is opened after [Finish] is clicked.
 - **[Open Printer Properties]:** The [Printer Properties] dialog box of the installed printer driver is displayed. For details about the setting, refer to the *Printing Guide*.
 - **[Print Test Page]:** Print the test page from this equipment.
 - **[Open Printer Preferences]:** The [Printer Preferences] dialog box is displayed. For details about the setting, refer to the *Printing Guide*.

When adding another equipment from the results

- 1 Select the [Advance] check box.
- 2 Click the equipment to be added from the results and then [+].



- 3 Check the [Default] check box of the equipment used as the default printer.



Tip

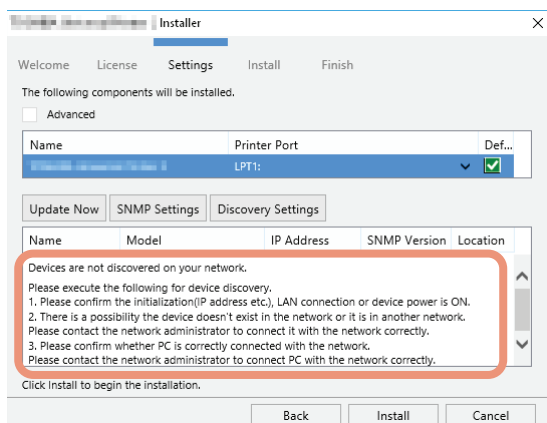
Remove any equipment in which no printer driver is installed by clicking [X].

❑ SMB printing

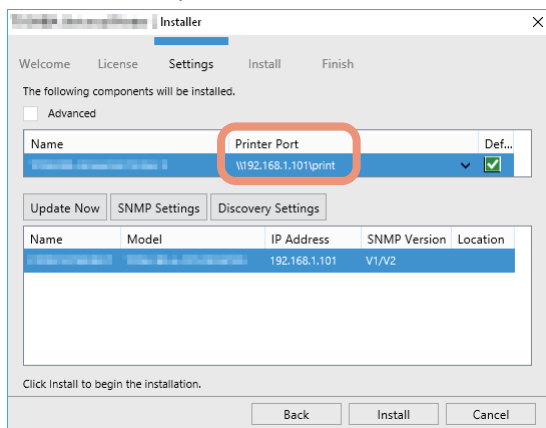
Install a printer driver by specifying the SMB port manually.

Note

- Before starting the configuration, make sure that this equipment is connected to a network and also that its power is turned ON.
- If this equipment is not discovered over the network, a message indicating this appears.

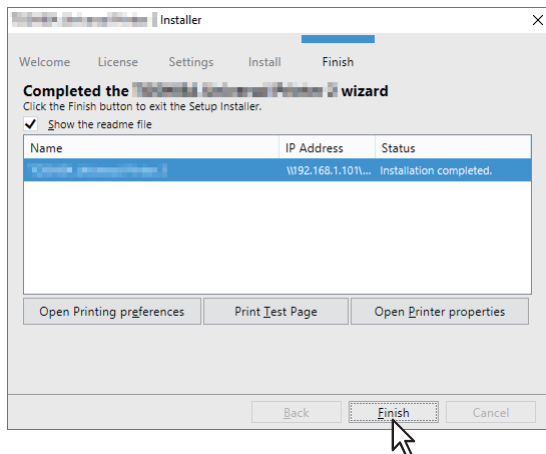


6 Enter a network path shown below in [Printer port]. \\<IP address>\print



7 Click [Install].

8 Click [Finish].



Tip

- The Installer may ask you to restart your computer. If it does, select “Yes, I want to restart my computer now.” and click [Finish] to restart your computer.
- You can set the printer driver and print settings which are required in order to perform test page printing or normal printing from this equipment. Click the buttons shown below to set them as needed. Setting can be made even after [Finish] has been clicked.
 - **Show the readme file:** When you select this check box, the Readme file is opened after [Finish] is clicked.
 - **[Open Printer Properties]:** The [Printer Properties] dialog box of the installed printer driver is displayed. For details about the setting, refer to the **Printing Guide**.
 - **[Print Test Page]:** Print the test page from this equipment.
 - **[Open Printer Preferences]:** The [Printer Preferences] dialog box is displayed. For details about the setting, refer to the **Printing Guide**.

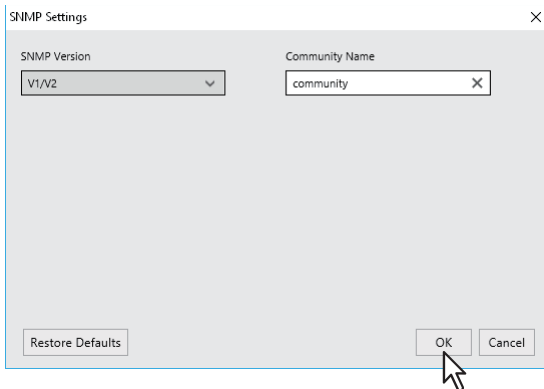
❑ Confirm or change the SNMP settings

[SNMP Settings]

If the SNMP settings are not the same in your TOSHIBA MFP and the [SNMP Settings] dialog box, you cannot find your TOSHIBA MFP. Verify the correct SNMP settings on the [SNMP Settings] dialog box and change the settings, if needed. Ask the administrator for details on the SNMP settings configured for your TOSHIBA MFP.

When SNMP V1 and V2 are used

1. Select [V1/V2] if a community name other than “private” (default) is set for the SNMP community name for your TOSHIBA MFP.
2. Change the SNMP community name.
3. Click [OK].



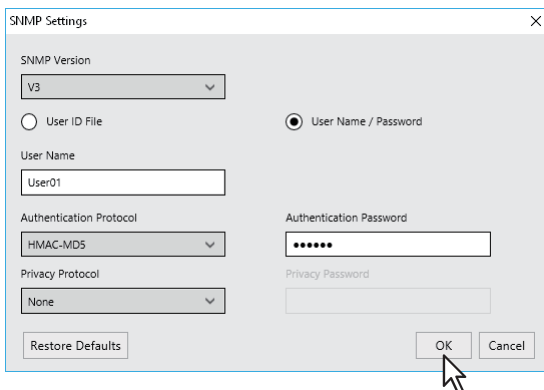
When SNMP V3 is used

1. Select [V3].
2. When a user ID file is used for authentication, click [Browse] to specify the file. When user authentication information is used for authentication, click [User Name/Password] to enter the necessary information.

Note

Consult the administrator for preliminary advice on how to authenticate users.

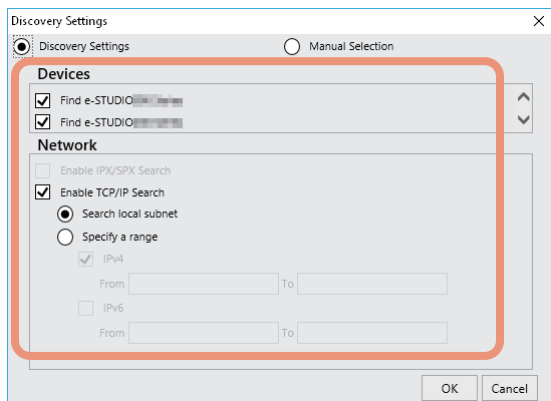
3. Click [OK].



* When SNMP V1, V2, and V3 are configured for your TOSHIBA MFP, select [V1/V2/V3] and carry out both of the above settings.

❑ Narrowing Down Search Conditions

If you want to narrow down the search conditions, click [Advanced]. On the [Discovery Settings] dialog box that appears, make the following settings as required:



1. Devices

Turn on the check box(es) for the MFPs to be searched for.

2. Network

“Enable IPX/SPX Search”

This function is not available.

“Enable TCP/IP Search”

Select this option to search for MFPs on your TCP/IP network. This option is available only when the TCP/IP protocols are installed on your computer. When this option is selected, you need to specify the detailed search conditions for MFPs on the network.

- Search local subnet—Select this option to search for MFPs in the local subnet. When this option is selected, select IPv4 or IPv6 check box for specifying the preferred protocol.
- Specify a range — Select this option to search for MFPs in a specific range of IP addresses. When this option is selected, select IPv4 or IPv6 check box and enter IP addresses in the [From] and [To] boxes to specify the range.

Manual connection

Devices in different segments may not be found. If you cannot find your MFP, find it manually from [Manual Selection].

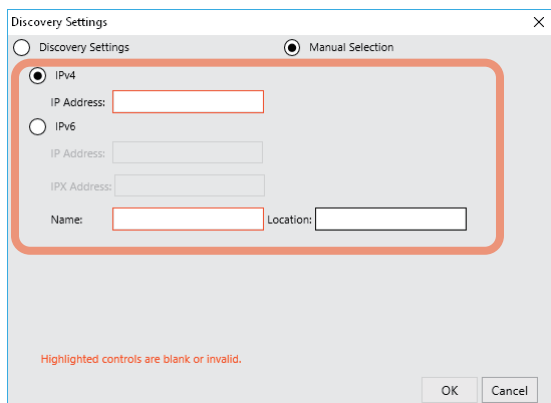
IPv4 IP Address—Select this option to specify the device in the IPv4 address. If this option is selected, enter the IPv4 address of your MFP.

IPv6 IP Address—Select this option to specify the device in the IPv6 address. If this option is selected, enter the IPv6 address of your MFP.

IPX IP Address—Select this option to specify the device in the IPX address. If this option is selected, enter the IPX address of your MFP.

Name—Enter the name of your MFP.

Location—Enter the location of your MFP.



Other Installations

The following printing environments cannot be configured by installation using Software Installer or the individual installers contained in the Install Disc (except USB printing in Windows 7 or later / Windows Server 2012 or later). When you want to configure the following printing environments, see the following pages for each procedure.

📖 P.40 “Raw TCP/LPR printing (“Add Printer” installation from file)”

📖 P.46 “USB printing”

📖 P.50 “IPP printing”

■ Raw TCP/LPR printing (“Add Printer” installation from file)

This section describes how to set up the printer driver for Raw TCP/LPR printing by using Add Printer Wizard.

Tip

Before installing the printer driver, check with your system administrator to make sure of the following:

- This equipment is connected to the network and turned on.
- The TCP/IP setting is correct on this equipment and your computer.

Note

To perform installation, you must log onto Windows with the “Administrator” account.

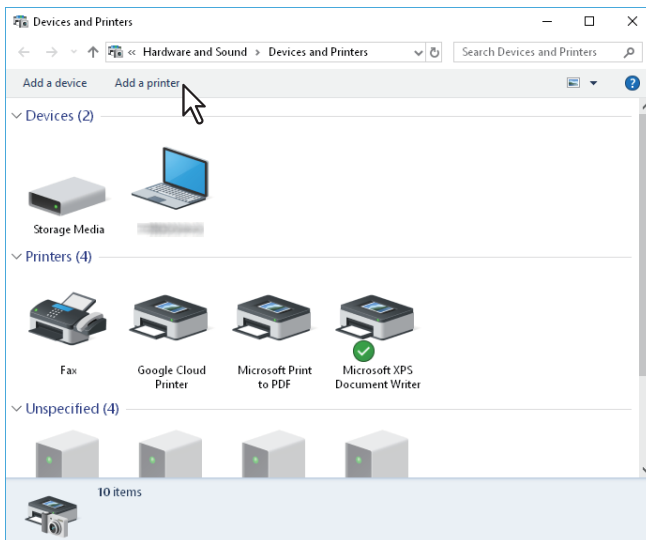
1 Open the printers folder.

Click [Start] and select [Settings] > [Devices] > [Devices and printers].

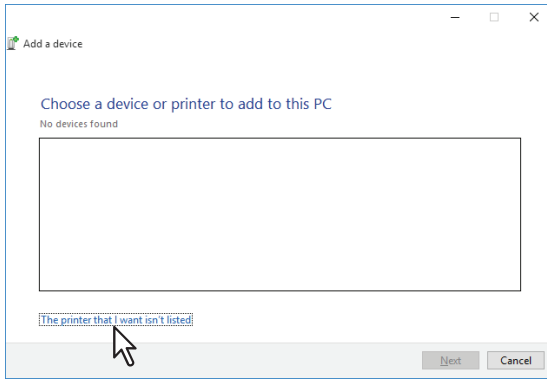
Tip

- For Windows 8.1 / Windows Server 2012, right-click in the lower left of the screen, then click [Control Panel] > [Devices and Printers].
- For Windows 7, click [Start] > [Devices and Printers].
- For Windows Server 2008, click [Start] > [Control Panel] > [Hardware and Sound] > [Printers].

2 Click [Add a printer].

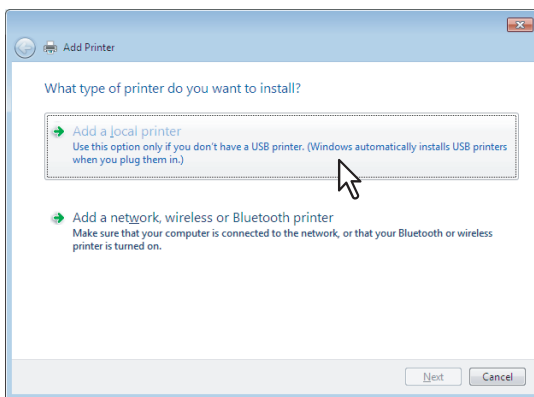


3 Click [The printer that I want isn't listed].

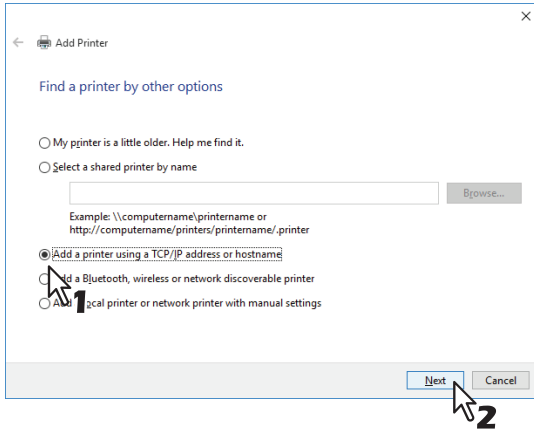


Tip

When you are using Windows 7 / Windows 8.1 / Windows Server 2008 / Windows Server 2012, the following screen is displayed. Select [Add a local printer].

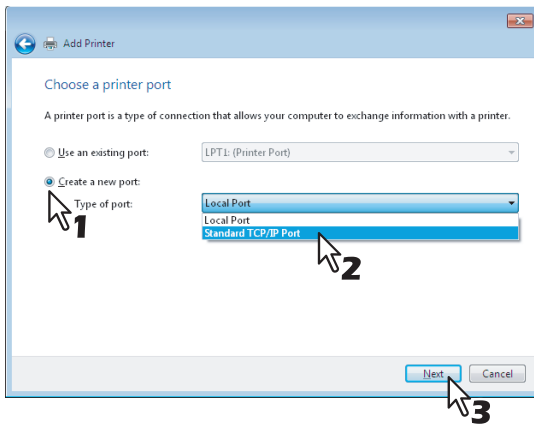


4 Select [Add a printer using a TCP/IP address or hostname], and click [Next].

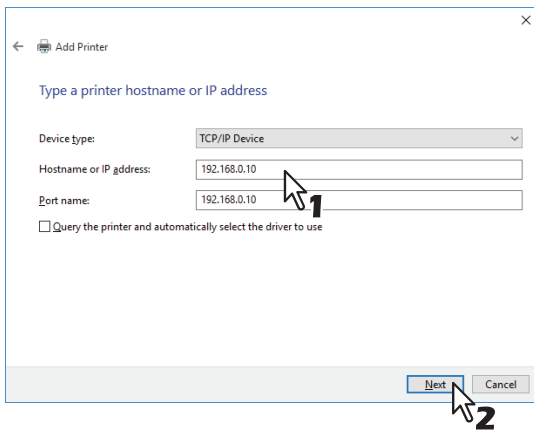


Tip

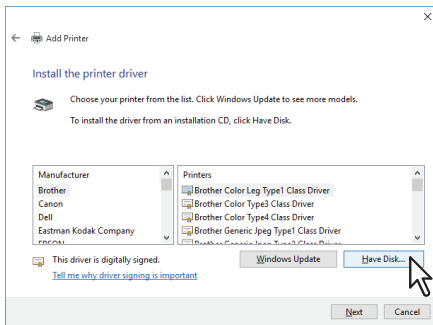
When you are using Windows 7 / Windows 8.1 / Windows Server 2008 / Windows Server 2012, the following screen is displayed. Select [Create a new port], and select [Standard TCP/IP Port]. Then click [Next].



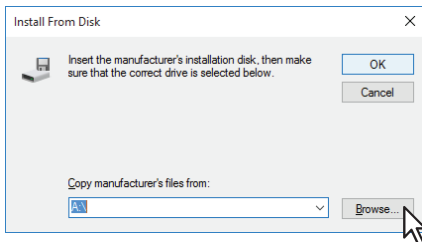
5 Enter the appropriate Hostname or IP address, and click [Next].



6 Click [Have Disk].



7 Click [Browse].



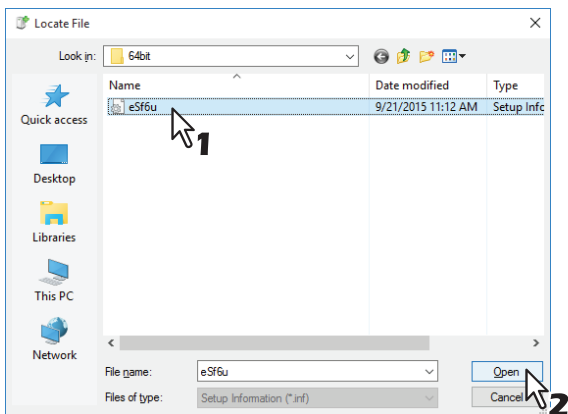
The [Locate File] dialog box appears.

8 Insert the Install Disc into the disc driver of the computer.

Tip

When you insert the Install Disc into the disc drive, Software Installer may launch automatically. In this case, click [Exit] to close it and continue the operation.

9 Locate the directory where the preferred printer driver is saved, select the .inf file, and then click [Open].



Tip

When installing the printer driver using the Install Disc, select the following folder:

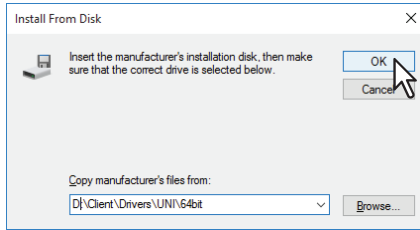
For the Windows computer 32-bit edition

[Install Disc]:\Client\Drivers\UNI\32bit

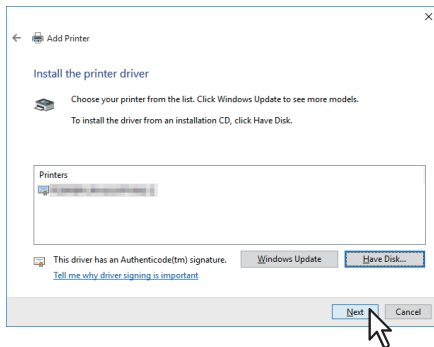
For the Windows computer 64-bit edition

[Install Disc]:\Client\Drivers\UNI\64bit

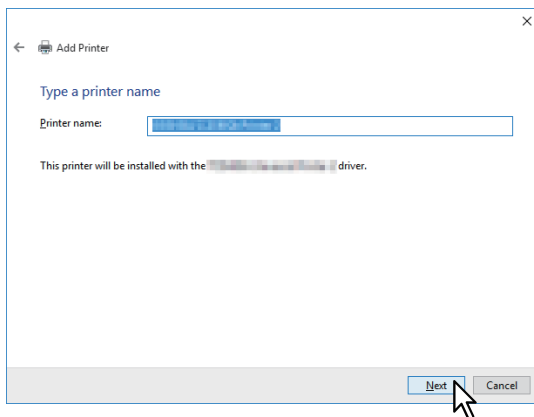
10 Confirm the file path and click [OK].



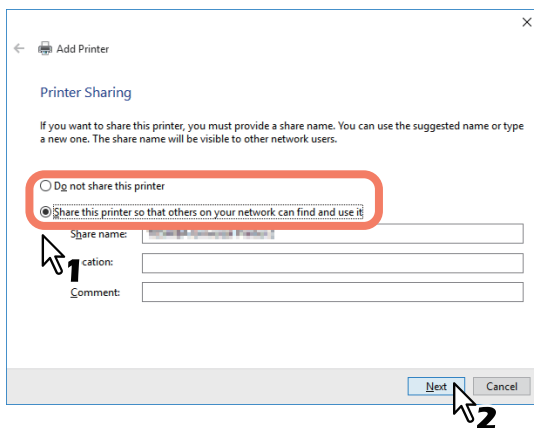
11 Confirm the correct driver has been selected and click [Next].



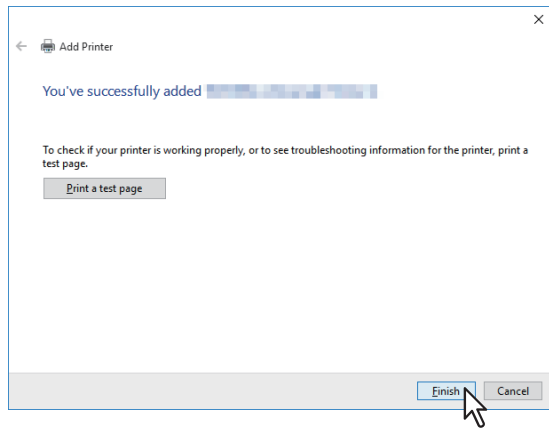
12 Confirm or change the Printer name and click [Next].



13 Select whether or not to share the printer to other network users, and click [Next].



14 Click [Finish].



The printer driver is installed.

■ USB printing

This section describes how to set up the printer driver when this equipment is connected with a USB cable on Windows 7 or later / Windows Server 2008 or later.

The procedure to install the printer driver for USB printing differs depending on the version of Windows used.

📖 P.46 “Windows 7 or later / Windows Server 2012 or later”

📖 P.48 “Windows Server 2008”

Note

- Use a USB2.0 Hi-Speed certified cable.
- Connect the equipment with a PC directly by the USB cable. When it is connected with a PC via a USB hub, the equipment may not be recognized.
- If a PCLX error occurs, open [Printer properties] of TOSHIBA Universal Printer2 in [Devices and Printers] and select the [Start printing after last page is spooled] check box in the [Advanced] tab.

□ Windows 7 or later / Windows Server 2012 or later

You can install a printer driver for USB printing in Windows 7 or later / Windows Server 2012 or later by using Software Installer contained in the Install Disc.

Note

To perform installation, you must log onto Windows with the “Administrator” account.

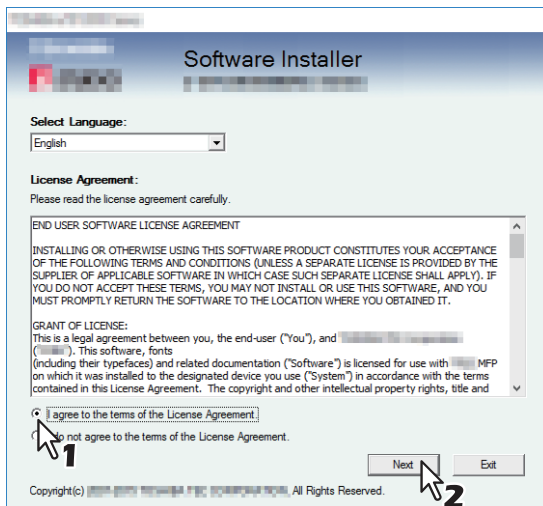
1 Power on this equipment and your computer.

2 Connect the USB cable to this equipment and your computer.

3 Insert the Install Disc into the disc drive.

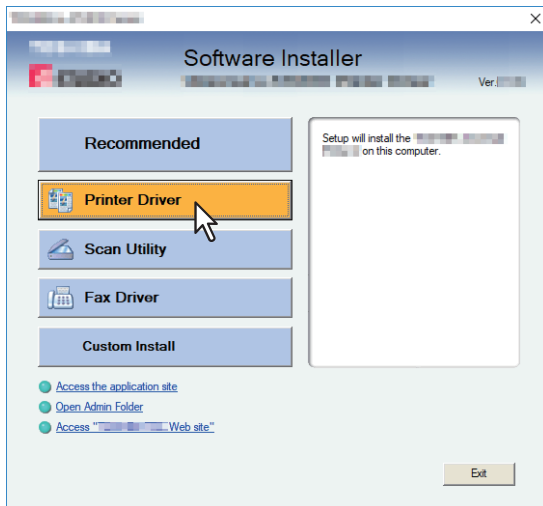
If Software Installer does not automatically start, use the Explorer to open the “e-STUDIO” folder in the Install Disc and double-click “Setup.exe”.

4 Select [I agree to the terms of the License Agreement.] and click [Next].



To change the display language, select a desired language from the [Select Language] box. The language of software to be installed differs depending on the language of operating system.

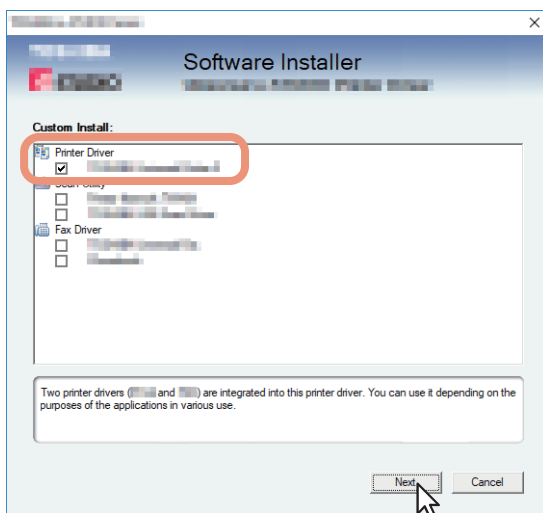
5 Click [Printer Driver] or [Custom Install].



Printer Driver — This option allows you to install only the Universal Printer 2 driver. When you select it, proceed to step 7.

Custom Install — This option allows you to select the printer driver and utilities which you want to install. When you select it, proceed to step 6.

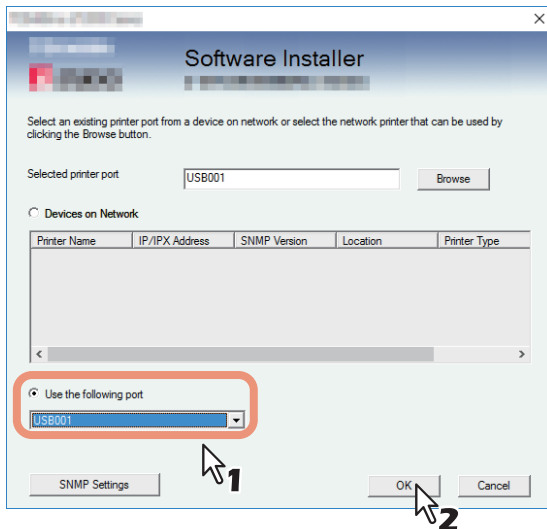
6 Select the software items which you want to install, and then click [Next].



7 Confirm the list of the software to install and click [Install].

8 Since the result message of the detection is displayed, click [Continue].

9 Select [Use the following port] and “USBxxx” (xxx are numbers). Then click [OK].



10 Confirm that the installation is completed, and then click [Finish].

Tip

The Installer may ask you to restart your computer. If it does, select “Yes, I want to restart my computer now.” and click [Finish] to restart your computer.

11 Click [Exit].

When a message appears asking whether to finish the installer, click [Yes].

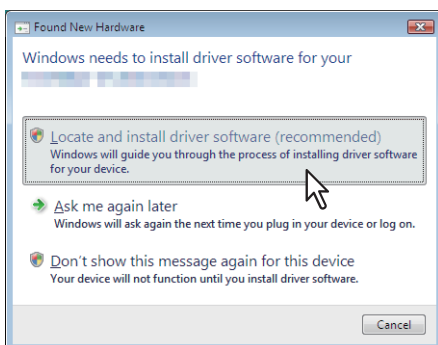
Windows Server 2008

You can install a printer driver for USB printing in Windows Server 2008 by Plug and Play.

Note

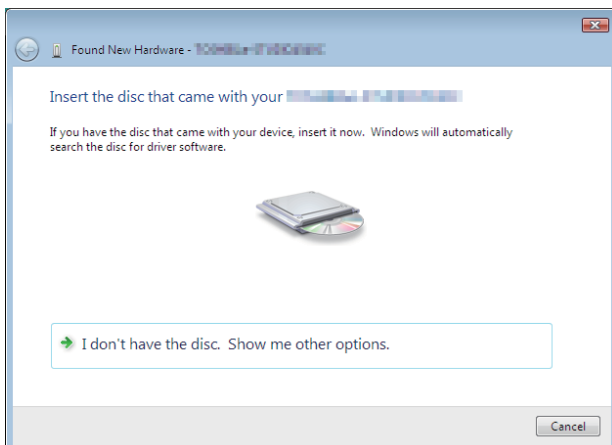
To perform installation, you must log onto Windows with the “Administrator” account; this enables the installation and uninstallation of client software.

- 1 Power on this equipment and your computer.**
- 2 Connect the USB cable to this equipment and your computer.**
The [Found New Hardware] dialog box appears.
- 3 Click [Locate and install driver software (recommended)].**



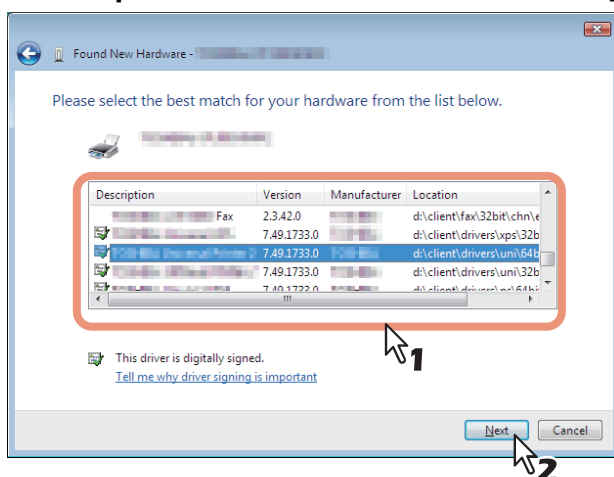
When the confirmation dialog box for online search is displayed, click [Don't search online].

4 Insert the Install Disc into the disc drive.



When you insert the Install Disc into the disc drive, Software Installer may launch automatically. In this case, click [Exit] to close it and continue the operation.

5 Select a printer driver to be installed and click [Next].



Note

All available drivers are listed. If a wrong driver is installed, printing may not be performed properly.

- **When using the Windows computer 32-bit edition, select the following folder:**
[Install Disc]:\Client\Drivers\UNI\32bit
- **When using the Windows computer 64-bit edition, select the following folder:**
[Install Disc]:\Client\Drivers\UNI\64bit

6 Click [Close].

■ IPP printing

This section describes how to set up the printer driver for IPP printing which is available for Internet connection. To set up the printer driver for IPP printing, install the printer driver by Add Printer Wizard.

Tip

Before installing the printer driver for IPP printing, check with your system administrator to make sure of the following:

- This equipment is connected to the network and turned on.
- The TCP/IP setting is correct on this equipment and your computer.

You can install a printer driver for IPP printing using the Add Printer Wizard. Perform installation corresponding to your Windows computer.

Note

To perform installation, you must log onto Windows with the “Administrator” account.

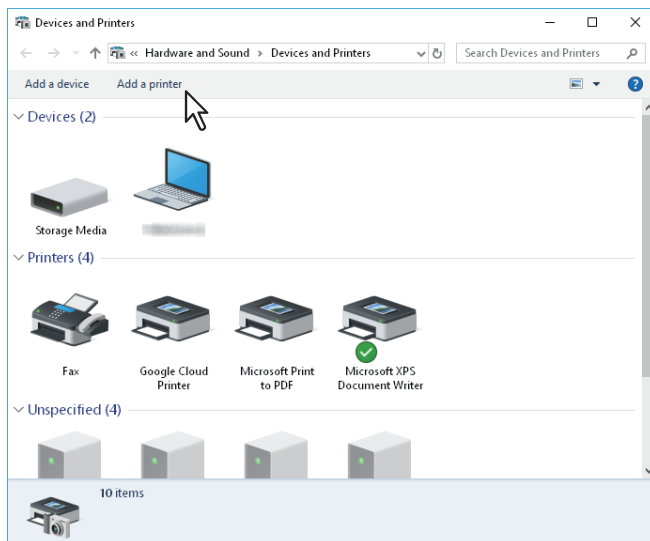
1 Open the printers folder.

Click [Start] and select [Settings] > [Devices] > [Devices and printers].

Tip

- For Windows 8.1 / Windows Server 2012, right-click in the lower left of the screen, then click [Control Panel] > [Devices and Printers].
- For Windows 7, click [Start] > [Devices and Printers].
- For Windows Server 2008, click [Start] > [Control Panel] > [Hardware and Sound] > [Printers].

2 Click [Add a printer].



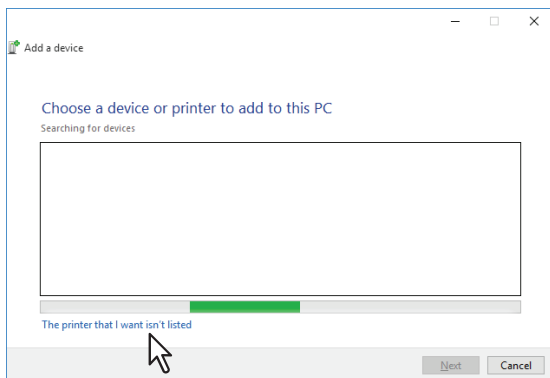
The [Add Printer] dialog box appears.

3 Select [Add a network, wireless or Bluetooth printer].

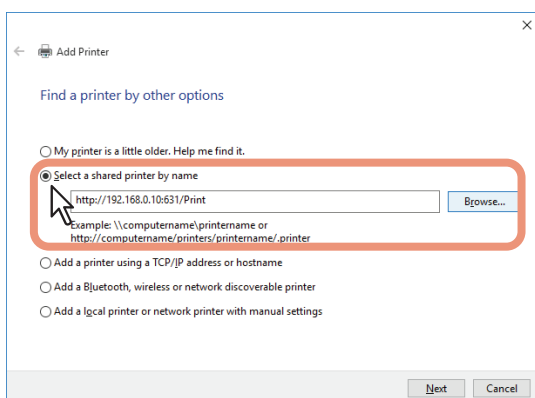
Tip

Depending on the version of Windows used, this screen does not appear.

4 Click [The printer that I want isn't listed].



5 Select the [Select a shared printer by name] check box, enter “http://[IP address]:631/Print” in the edit box.



- Enter the IP address of this equipment instead of [IP address].
Example: IP address = 192.168.1.2
http://192.168.1.2:631/Print
- Enter the IPv6 address in the [Printer Name or IP Address] box when the MFP is connected in an IPv6 network.
- If your network uses a DNS or WINS server, enter the printer name of this equipment provided from DNS or WINS instead of [IP address].
Example: Print Server Name = Mfp-05212774
http://Mfp-05212774:631/Print
- When you connect from the Internet, enter the FQDN of this equipment provided from DNS instead of [IP address].
Example: URL = mfp_05212774.toshibatec.com
http://mfp_05212774.toshibatec.com:631/Print

Note

“P” for “Print” in the IPP URL must be capitalized. The IPP port can be created by entering “print” (non-capitalized) in the IPP URL, but the print job cannot be sent to the equipment. In that case, delete the IPP port and then create the IPP port correctly again.

Tip

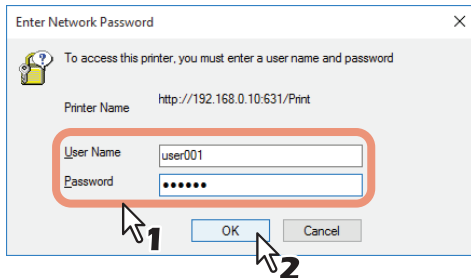
- If the IPP Port80 Enabled option is enabled on this equipment, you can exclude the port number from the URL. (i.e. “http://192.168.1.2/Print”)
- If the Enable SSL/TLS option for IPP Print is enabled, you must enter “https://[IP address]:[SSL/TLS port number]/Print” in the edit box. (i.e. “https://192.168.1.2:443/Print”)

6 Click [Next].

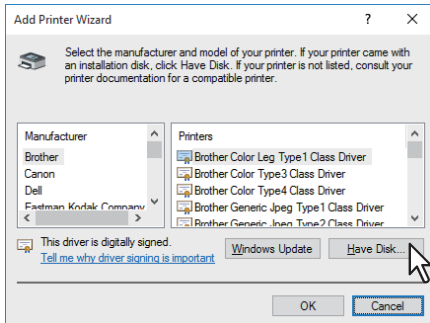
A dialog box appears to confirm the connection with the specified MFP. Wait until completion.

Note

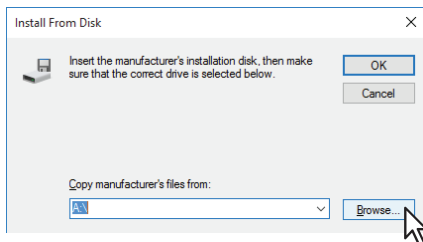
When the Authentication setting for IPP Print is enabled, the dialog box to enter a user name and password appears. If this dialog box appears, enter the user name and password and click [OK]. For the user name and password, ask your administrator.



7 Click [Have Disk].



8 Click [Browse].

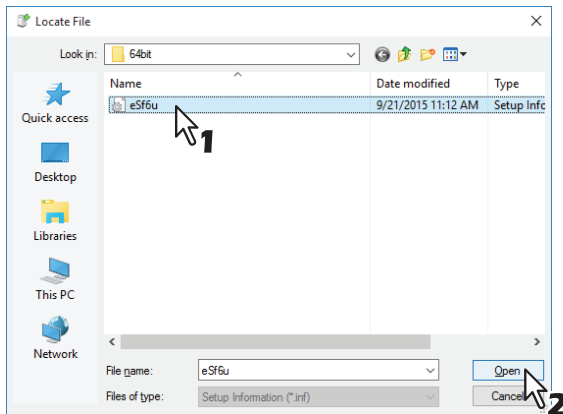


The [Locate File] dialog box appears.

9 Insert the Install Disc into the disc drive.

When you insert the Install Disc into the disc drive, Software Installer may launch automatically. In this case, click [Exit] to close it and continue the operation.

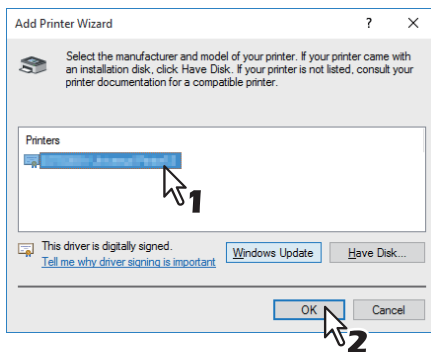
10 Locate the directory where the printer driver is located, select the .inf file, and then click [Open].



- When using the Windows computer 32-bit edition, select the following folder:
[Install Disc]:\Client\Drivers\UNI\32bit
- When using the Windows computer 64-bit edition, select the following folder:
[Install Disc]:\Client\Drivers\UNI\64bit

11 Click [OK].

12 Select the printer driver and click [OK].



When the [Windows Security] dialog box is displayed, click [Install this driver software anyway] to continue the installation.

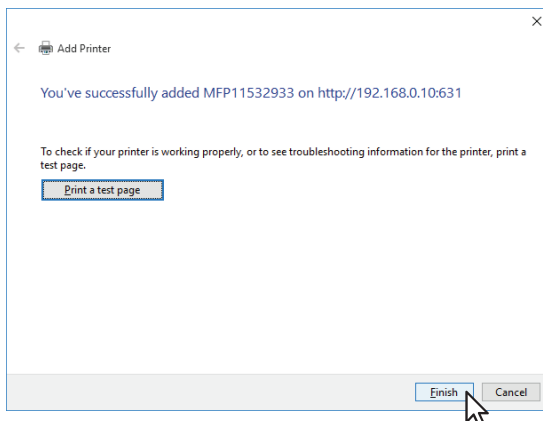
13 Click [Next].

Tip

If the Printer Sharing dialog box is displayed, select whether to share the equipment with other users on your network and then click [Next].

- Change the share name or enter the location and comments as required.

14 Click [Finish].



The printer driver is installed.

Uninstalling Printer Driver

The following instructions describe how to uninstall a printer driver.

- 📖 P.54 “Windows 7 or later / Windows Server 2012 or later”
- 📖 P.56 “Windows Server 2008”

■ Windows 7 or later / Windows Server 2012 or later

Follow the steps below to uninstall a printer driver from Windows 7 or later / Windows Server 2012 or later.

Note

To perform uninstallation, you must log onto Windows with the “Administrator” account.

1 Open the [Devices and Printers] folder.

Click [Start] and select [Settings] > [Devices] > [Devices and printers].

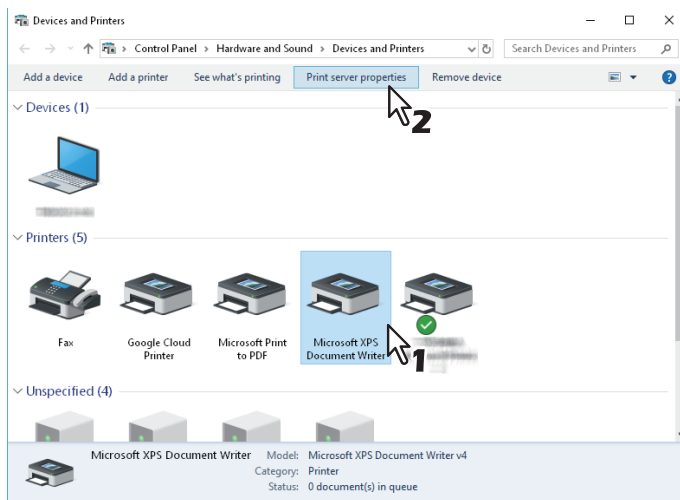
Tip

- For Windows 8.1 / Windows Server 2012, right-click in the lower left of the screen, then click [Control Panel] > [Devices and Printers].
- For Windows 7, click [Start] > [Devices and Printers].

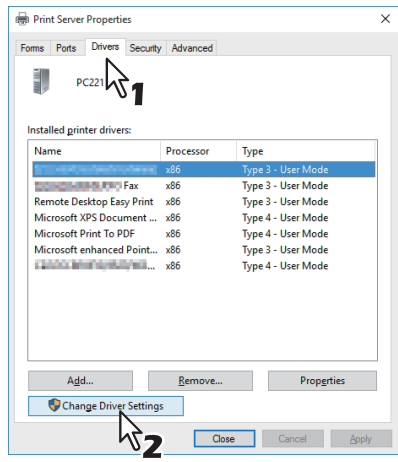
2 Right click on the printer to be deleted and select [Remove device] from the menu displayed.

When the confirmation dialog box for deletion is displayed, click [Yes].

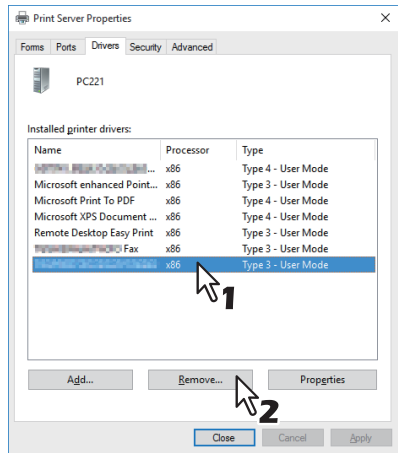
3 Select one of the remaining printer icons and click [Print server properties].



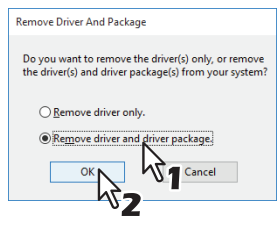
4 Display the [Drivers] tab and click [Change Driver Settings].



5 Select the printer driver to be deleted and click [Remove].



6 Select [Remove driver and driver package] and click [OK].



7 Click [Yes].

8 Click [Delete].

9 Click [OK].

10 Close the [Print Server Properties] dialog box.

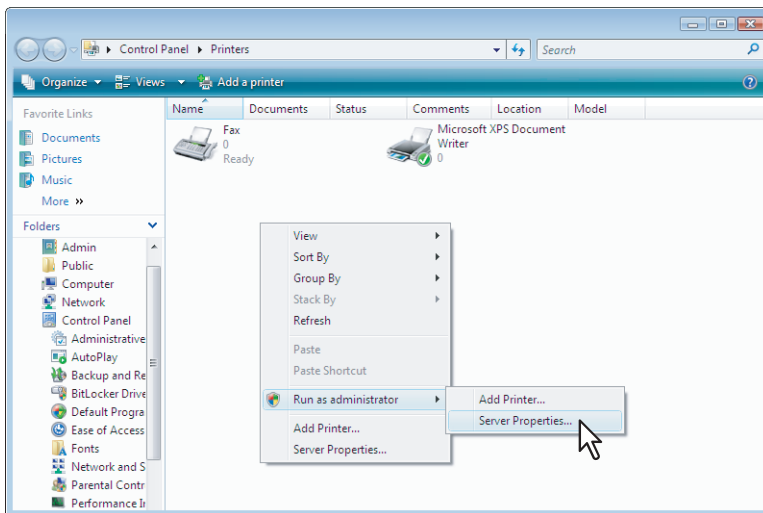
■ Windows Server 2008

Follow the steps below to uninstall a printer driver from Windows Server 2008.

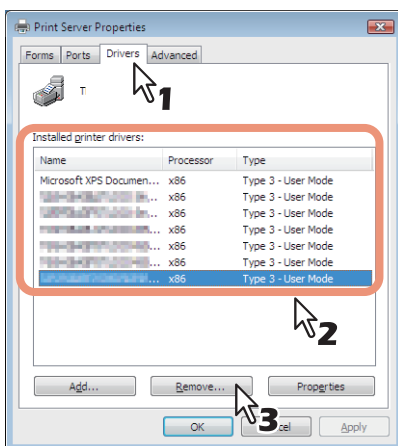
Note

To perform uninstallation, you must log onto Windows with the “Administrator” account.

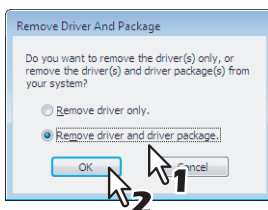
- 1 Click [Start], select [Control Panel] and click [Printer] under [Hardware and Sound] to open the [Printers] folder.**
- 2 Right click on the printer to be deleted and select [Delete] from the menu displayed.**
When the confirmation dialog box for deletion is displayed, click [Yes].
- 3 Right click in the blank area in the [Printers] window and click [Run as administrator] and then [Server Properties] in the menu displayed.**



- 4 Display the [Drivers] tab and select the printer drivers to be deleted. Then click [Remove].**



- 5 Select [Remove driver and driver package] and click [OK].**



- 6 Click [Yes].**

-
- 7** Click [Delete].
 - 8** Click [OK].
 - 9** Close the [Print Server Properties] dialog box.

Repairing Printer Driver

When the printer driver will not work correctly, you can repair it.

Note

To repair the printer driver, you must log onto Windows with the “Administrator” account.

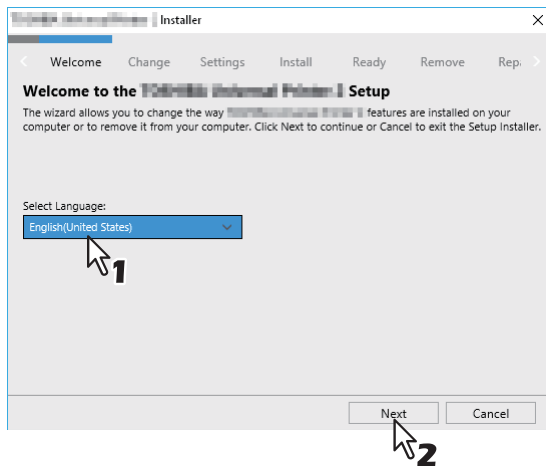
1 Insert the Install Disc into the disc drive.

When the Install Disc is inserted, Software Installer may launch automatically. In this case, click [Exit] to close it and continue the operation.

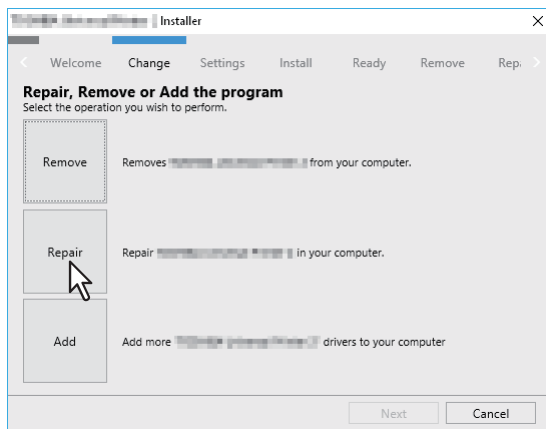
2 Open the printer driver folder that you want to repair and double click the [essetup.exe] icon.

To repair Universal Printer 2 driver, locate “[Install Disc]:\Client\Drivers\UNI\”.

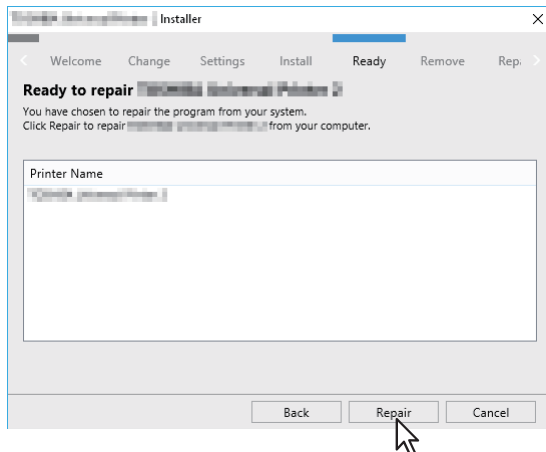
3 Select the language and click [Next].



4 Click [Repair].



5 Click [Repair].



6 Click [Finish] to close the wizard.

INSTALLING SCAN DRIVER AND UTILITIES (Windows)

This chapter describes the installation of the scan driver and scan utilities.

Before Installation	60
Type of scan driver and utilities	60
System requirements	60
Installing Scan Driver and Utilities	61
Installing the scan driver and utilities using the installer	61
Uninstalling Scan Driver and Utilities	63

Before Installation

This section describes the installation of the scan driver and utilities. Before installing them, read this section.

■ Type of scan driver and utilities

Install the following utilities to use the network scan functions.

- **Printer Network TWAIN driver**
You can use Printer Network TWAIN driver to remotely import the scanned images into your TWAIN-compliant application.
- **TOSHIBA USB Scan driver**
You can use TOSHIBA USB Scan driver to import the scanned images into your TWAIN/WIA-compliant application via USB connection.

■ System requirements

To install the scan driver and utilities on a Windows computer, the following is required.

- **Display resolution**
1024 x 768 dots or more
- **Display color**
High Color (16 bit) or higher is recommended
- **CPU**
Recommended environment required by OS
- **OS**
Windows 7 Service Pack 1 or later
Windows Server 2008 Service Pack 2 or later
- **Recommended memory**
To import 600 dpi color or black & white documents with the A4/LT size: 256 MB

□ When the scan driver and utilities have been installed

If the scan driver and utilities have been installed from another e-STUDIO Install Disc, uninstall them, then install again from the Install Disc.

When you uninstall the software, click [No] at the dialog box that displays the message to delete the settings for the scan driver and utilities so that you can restore the settings after installing the new one.

Installing Scan Driver and Utilities

This section describes how to install the scan driver and utilities.

■ Installing the scan driver and utilities using the installer

Perform installation corresponding to your Windows computer.

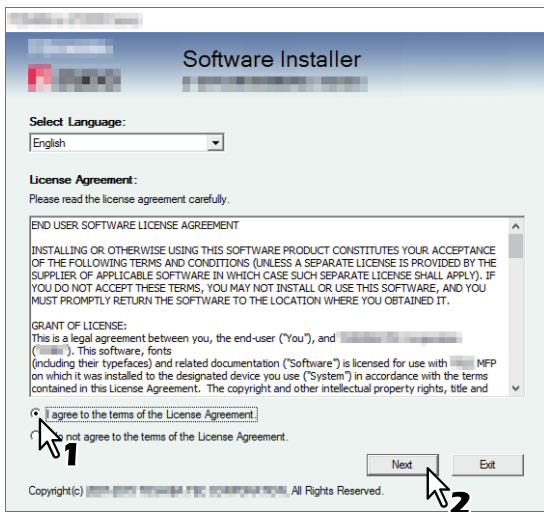
Note

To perform installation, you must log onto Windows with the “Administrator” account; this enables the installation and uninstallation of client software.

1 Insert the Install Disc into the disc drive.

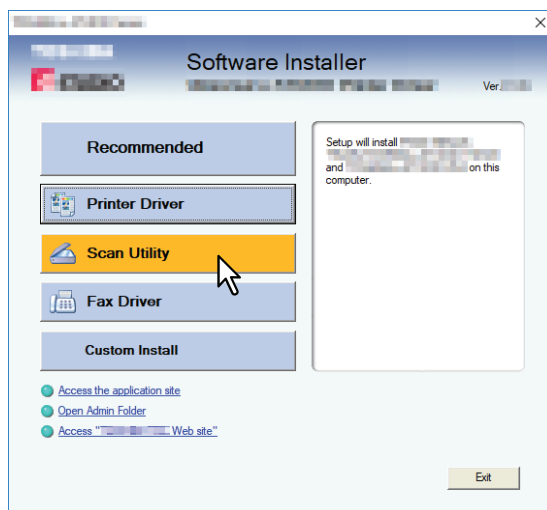
If Software Installer does not automatically start, use the Explorer to open the “e-STUDIO” folder in the Install Disc and double-click “Setup.exe”.

2 Select [I agree to the terms of the License Agreement.] and click [Next].



To change the display language, select the desired language from the [Select Language] box. The language of software to be installed differs depending on the language of operating system.

3 Click [Scan Utility].



4 Confirm the list of the software to install and click [Install].

5 When the installation is complete, click [Finish].

The main menu is displayed.

Note


The Installer may ask you to restart your computer. If it does, select “Yes, I want to restart my computer now.” and click [Finish] to restart your computer.

6 Click [Exit].

When a message appears asking whether to finish the installer, click [Yes].

Uninstalling Scan Driver and Utilities

You can uninstall the scan driver and utilities using the Uninstall a program function in Control Panel. For instructions on how to uninstall them, refer to the following section.

 P.70 “Uninstalling Client Software”

INSTALLING NETWORK FAX UTILITIES (Windows)

This chapter describes the installation of the network fax utilities.

Before Installation	66
Type of network fax utilities	66
System requirements	66
Installing Network Fax Utilities	67
Uninstalling the Network Fax Software	68
Uninstalling N/W-Fax driver (TOSHIBA Universal Fax).....	68
Uninstalling Phone Book.....	68

Before Installation

This section describes the installation of the network fax utilities. Before installing them, read this section.

■ Type of network fax utilities

Install the following utilities to use the network fax functions.

N/W-Fax driver (TOSHIBA Universal Fax)

The N/W-Fax driver (TOSHIBA Universal Fax) enables you to set up send lists and send electronic documents from your client computer to one or more destinations. You print to the fax much in the same way that you would choose to print to a designated printer, which makes using the N/W-Fax driver (TOSHIBA Universal Fax) quick and simple. You can select the fax properties. Fax properties are the attributes you can set to define sender and recipient information for processing fax jobs such as dialing options, sender information, fax resolution and page layout. Other features include an easy-to-use fax scheduler that allows you to set up a date and time to transmit your fax. Cover page options are also provided. You can include a customized cover page with your fax transmission that can include sender and recipient fax information and a detailed message. You can easily maintain sender and contact information that can be printed on the cover pages.

Phone Book

With the Phone Book you can easily add or modify fax recipient names, fax numbers, and E-mail addresses to the address book. This utility allows you to manage recipients of the fax, select and display fax recipients from the address book, as well as recipient fax numbers and other contact information. Additionally, Phone Book allows you to import or export address book data to or from other address book programs compatible to this equipment.

■ System requirements

To install the N/W-Fax driver (TOSHIBA Universal Fax) and Phone Book on a Windows computer, the following is required.

- **Display resolution**
1024 x 768 dots or more
- **Display color**
High Color (16 bit) or higher is recommended
- **CPU**
Recommended environment required by OS
- **Memory**
The required memory size for OS
- **OS**
Windows 7 Service Pack 1 or later
Windows Server 2008 Service Pack 2 or later

□ When network fax utilities and Phone Book have been installed

If the N/W-Fax driver (TOSHIBA Universal Fax) and Phone Book have been installed from another e-STUDIO Install Disc, uninstall them, then install again from the Install Disc.

When you uninstall the Phone Book, click [No] at the dialog box that displays the message to delete the settings for the Phone Book so that you can restore the settings after installing the new one.

Note

If the TOSHIBA e-STUDIO Fax driver has been installed, do not uninstall it.

Installing Network Fax Utilities

Perform installation corresponding to your Windows computer.

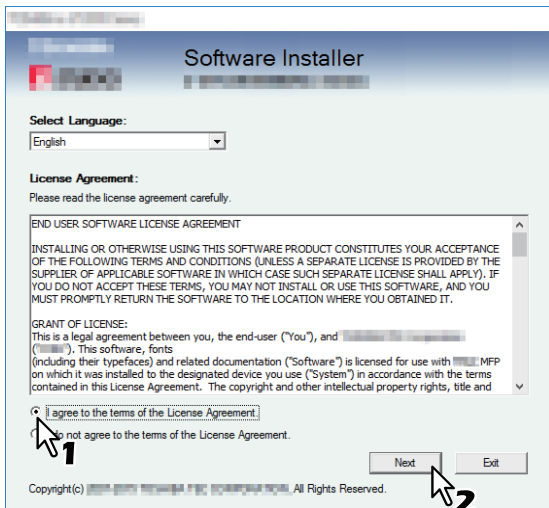
Note

To perform installation, you must log onto Windows with the “Administrator” account; this enables the installation and uninstallation of client software.

1 Insert the Install Disc into the disc drive.

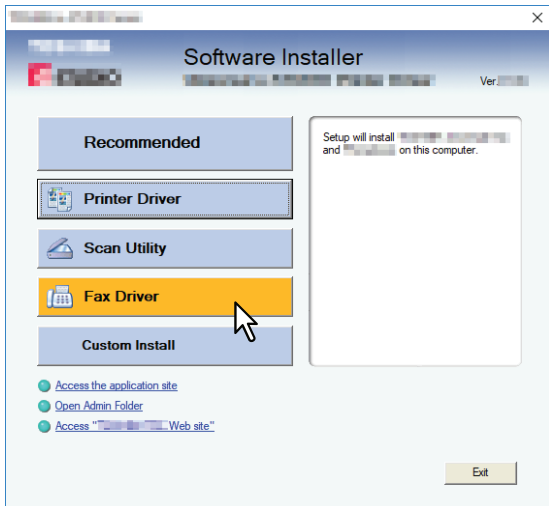
If Software Installer does not automatically start, use the Explorer to open the e-STUDIO folder in the Install Disc and double-click “Setup.exe”.

2 Select [I agree to the terms of the License Agreement.] and click [Next].



To change the display language, select the desired language from the [Select Language] box. The language of software to be installed differs depending on the language of operating system.

3 Click [Fax Driver].



4 Confirm the list of the software to install and click [Install].

Note

When you want to verify and/or change the SNMP settings to find the target TOSHIBA MFPs, see step 4 in the following section:

📖 P.16 “Procedure for Recommended Installation”

Since the subsequent procedure is the same as that for printer driver installation, the steps are omitted. See the following pages according to the connection environment.

📖 P.26 “Raw TCP/LPR printing”


📖 P.31 “SMB printing”

Uninstalling the Network Fax Software

The following instructions explain how to uninstall the N/W-Fax driver (TOSHIBA Universal Fax) and Phone Book.


■ Uninstalling N/W-Fax driver (TOSHIBA Universal Fax)

You can uninstall a N/W-Fax driver (TOSHIBA Universal Fax). Since the uninstallation procedure is the same as for printer drivers, it is omitted. When performing uninstallation, see the following page:

 P.54 "Uninstalling Printer Driver"

■ Uninstalling Phone Book

You can uninstall Phone Book using Uninstall a program function in Control Panel. For instructions on how to uninstall them, refer to the following section.

 P.70 "Uninstalling Client Software"

INSTALLATION MAINTENANCE

This chapter describes how to uninstall and repair the client software using the set-up program.

Uninstalling Client Software	70
Repairing Client Software	71

Repairing Client Software

When the client software will not work correctly, you can repair it.

Note

- TOSHIBA USB Scan driver, Printer Network TWAIN driver, and Phone Book cannot be repaired by the set-up program. To repair them, uninstall them and install again.
- To repair the client software, you must log onto Windows with the “Administrator” account.

1 Insert the Install Disc into the disc drive.

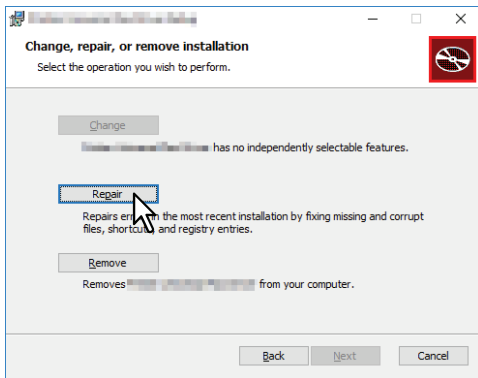
When the Install Disc is inserted, Software Installer may launch automatically. In this case, click [Exit] to close it and continue the operation.

2 Open the software folder that you want to repair and double click the following files.

- To repair N/W-Fax driver (TOSHIBA Universal Fax) (for Windows computer 32-bit edition), locate “[Install Disc]:\Client\FAX\32bit\print32Fax.msi”.
- To repair N/W-Fax driver (TOSHIBA Universal Fax) (for Windows computer 64-bit edition), locate “[Install Disc]:\Client\FAX\64bit\print64Fax.msi”.

3 Click [Next].

4 Click [Repair].



5 Click [Repair].

Repairing files starts.

6 Click [Finish] to close the wizard.

CAUTIONS AND RELATED MESSAGES REGARDING INSTALLATION (Windows)

This chapter describes how to uninstall and repair the client software using the set-up program.

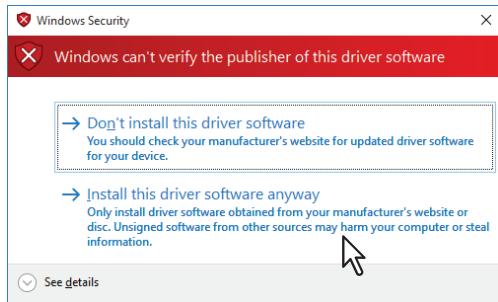
Cautions before installation	74
Messages that may appear in installation	75
Cautions after installation	76

Cautions before installation

- To perform installation for Universal Printer2 driver and other client software, you must log onto Windows with the “Administrator” account.
- Even when you have logged on Windows with the “Administrator” account, the [User Account Control] dialog box may appear. In this case, click a button for allowing the operation, such as [Continue], and then continue.
- Even if you have logged on with a user account other than “Administrator”, entering an administrator password upon display of the [User Account Control] dialog box enables you to perform the installation by temporarily changing the user account.
- If Windows 7 or later / Windows Server 2008 or later is used, you can perform the installation from the installer by temporarily changing the user account following the procedure below.
 - Open the “e-STUDIO” folder in the Install Disc, and then double-click “Setup.exe”.
 - When the [User Account Control] dialog box is displayed, enter an administrator password, and then click [Yes] ([OK]).

Messages that may appear in installation

If the following message appears, click [Install this driver software anyway] to proceed with the installation.



Cautions after installation

- To perform uninstallation, you must log onto Windows with the “Administrator” account. Even if you have logged on with a user account other than “Administrator”, entering an administrator password upon display of the [User Account Control] dialog box enables you to perform the installation by temporarily changing the user account.
- Even when you have logged on Windows with the “Administrator” account, the [User Account Control] dialog box may appear. In this case, click a button for allowing the operation, such as [Continue], and then continue.
- Before using the printer driver for printing, configure the installed options of the equipment on the printer driver. Refer to the **Printing Guide** for the instructions.

INDEX

I

Install Disc	12
Installer.....	12
Internet printing.....	23
IPP printing.....	40, 50

N

N/W-Fax driver (TOSHIBA Universal Fax).....	13, 66
---	--------

P

Phone Book	13, 66
Printer Driver.....	13, 22
Printer Network TWAIN Driver.....	13, 60

R

Raw TCP/LPR Printing.....	23
---------------------------	----

S

SMB Printing.....	23
System Requirements.....	22

T

TOSHIBA USB Scan Driver	13, 60
-------------------------------	--------

U

Uninstalling	54, 68
Universal Printer 2	12
USB Printing.....	46

DP-4780S
DP-5280P
FC-3380CS
FC-3880CS
FC-3880CP
FC-3890CS
FC-4790CS
OME170035A0

MULTIFUNCTIONAL DIGITAL SYSTEMS / PRINTER
Software Installation Guide

TOSHIBA TEC CORPORATION

1-11-1, OSAKI, SHINAGAWA-KU, TOKYO, 141-8562, JAPAN

